

THE GRAPHIC MATERIAL AND DESIGN ON ALL SHEETS IN THIS PROJECT ARE THE PROPERTY OF AVRAME U.S.A. ANY REPRODUCTION OR REUSE OF THE MATERIAL AND DESIGN CONTAINED HEREIN IS PROHIBITED WITHOUT THE WRITTEN PERMISSION OF AVRAME U.S.A. VIOLATORS WILL BE PROSECUTED TO THE FULLEST EXTENT OF THE LAW. COPYRIGHT AVRAME U.S.A. ALL RIGHTS RESERVED.

TRIO 75 W/ BASEMENT

DRAWN FOR ONE-TIME USE FOR
AVRAME U.S.A.

ISSUE DATE 04/15/2021

REVISIONS

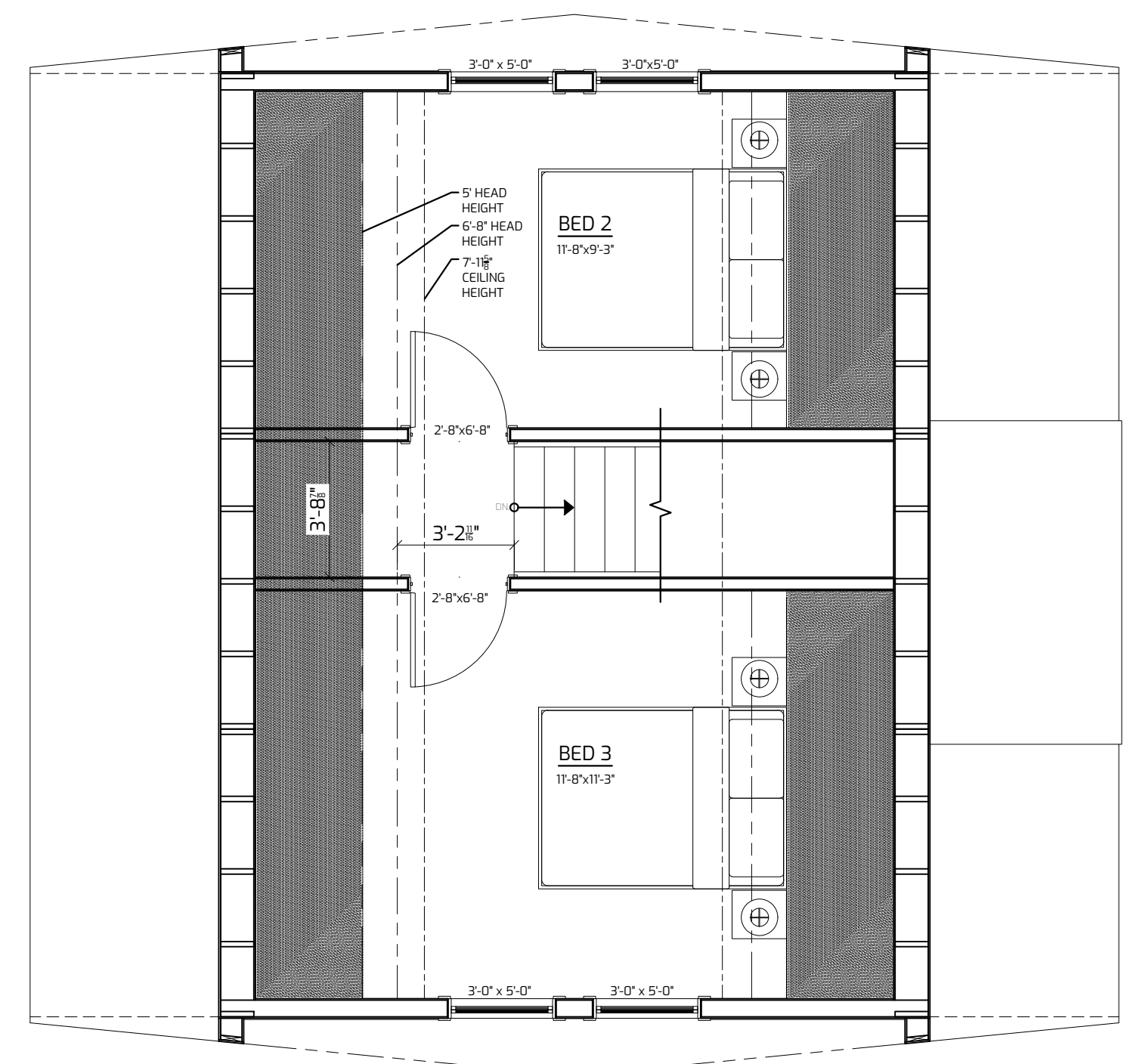
REVISION DELTA

ID4.1
 PLANS & ELEVATIONS

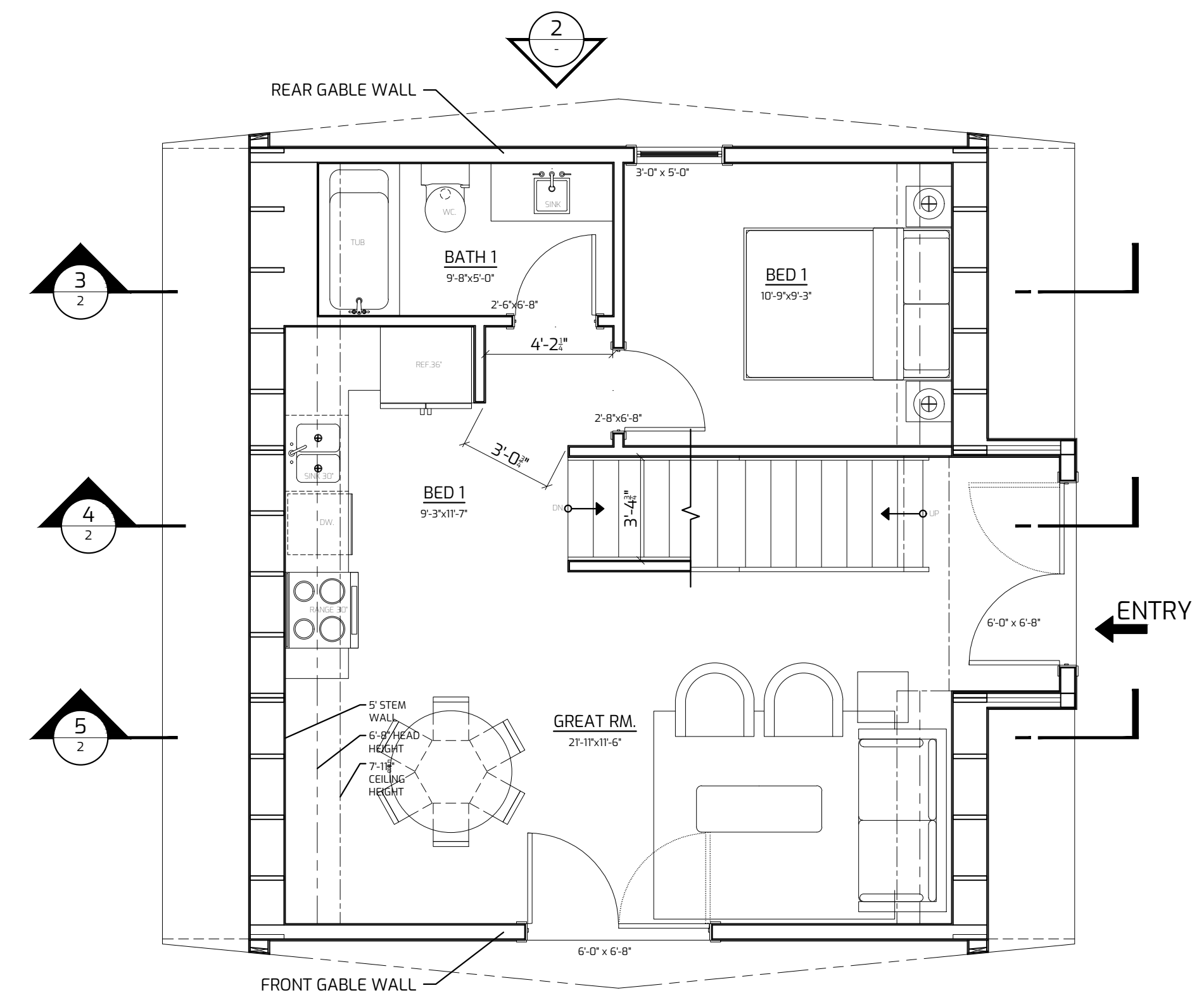
INTERMEDIATE BEARING WALL BEAM SCHEDULE		
BEAM LENGTH	BEAM SIZE	TRIMMERS KING
5FT	(2) 2X6	1 TRIMMER 1 KING
4FT	(2) 2X6	1 TRIMMER 1 KING
5FT	(2) 2X6	1 TRIMMER 1 KING
7FT	(2) 1.5X5.5 (1.5X G.6)	2 TRIMMERS 2 KING
8FT	(2) 1.5X5.5 (1.5X G.6)	2 TRIMMERS 2 KING

ADDT. ENGINEERING REQUIRED FOR CONTINUOUS COLUMN DESIGN. IF REQUIRES W/ POST ON P CENTERS, W/ 30X30X12 SPOT FOOTINGS.

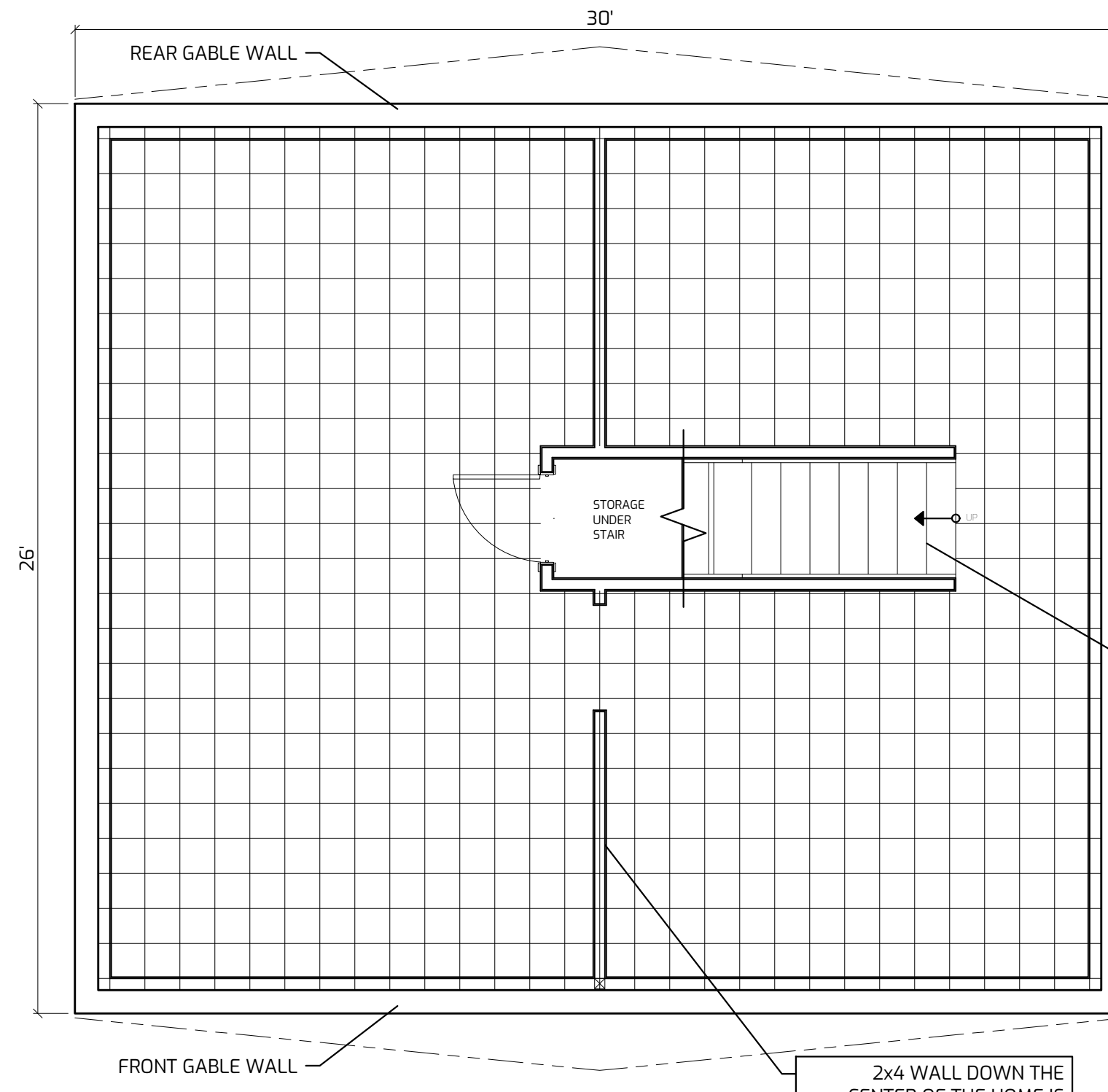
TABLE VALID FOR HEADERS IN CENTER CHAIR/STAIR/BASEMENT BEARING WALL ONLY. BASED ON RESIDENTIAL 40 PSF LIVE LOAD AND 15 PSF DEAD LOAD.



5. --- BASEMENT DESIGN 2ND LEVEL FLOOR PLAN
 SCALE: 1/4"=1'



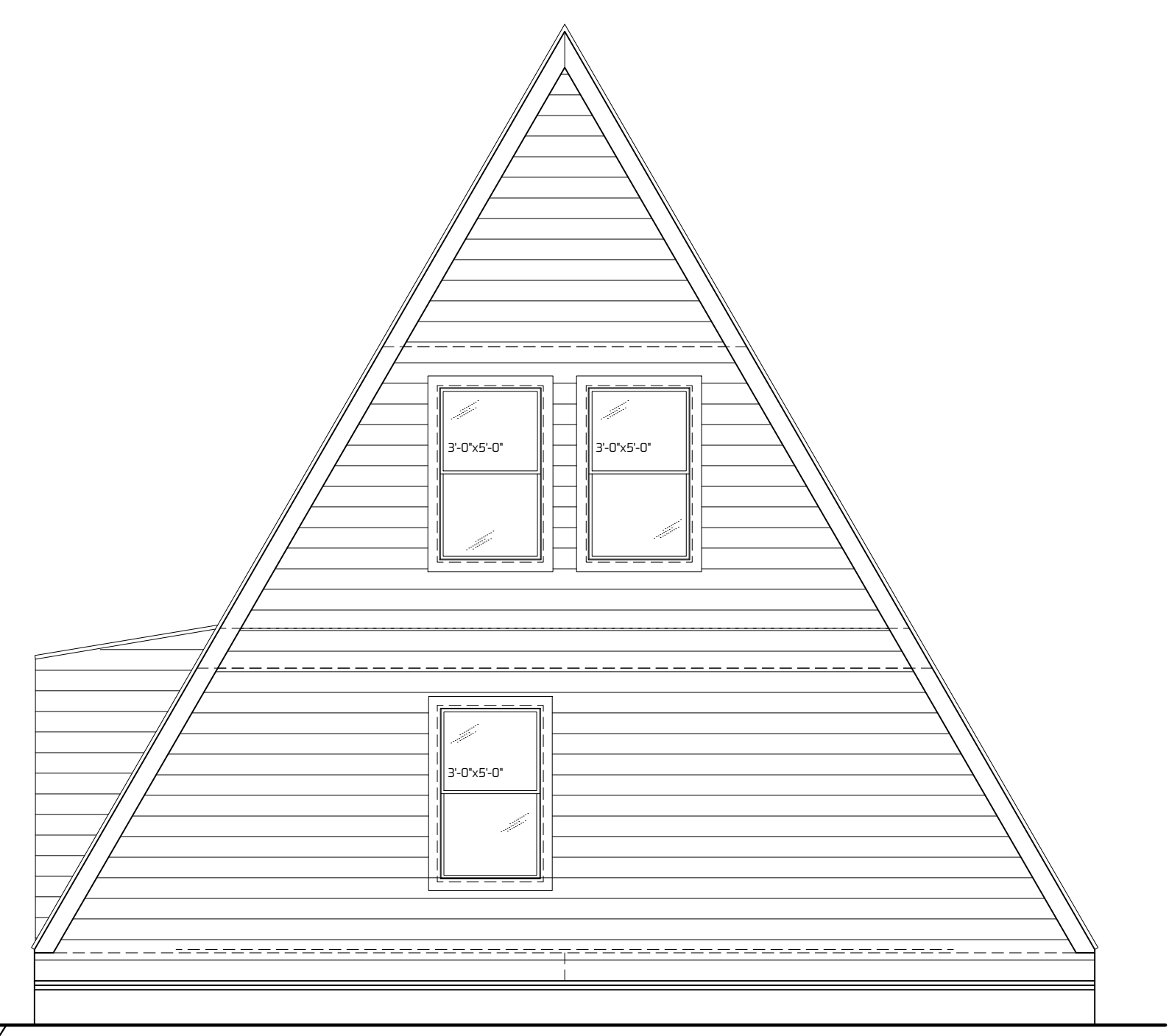
4. --- BASEMENT DESIGN 1ST LEVEL FLOOR PLAN
 SCALE: 1/4"=1'



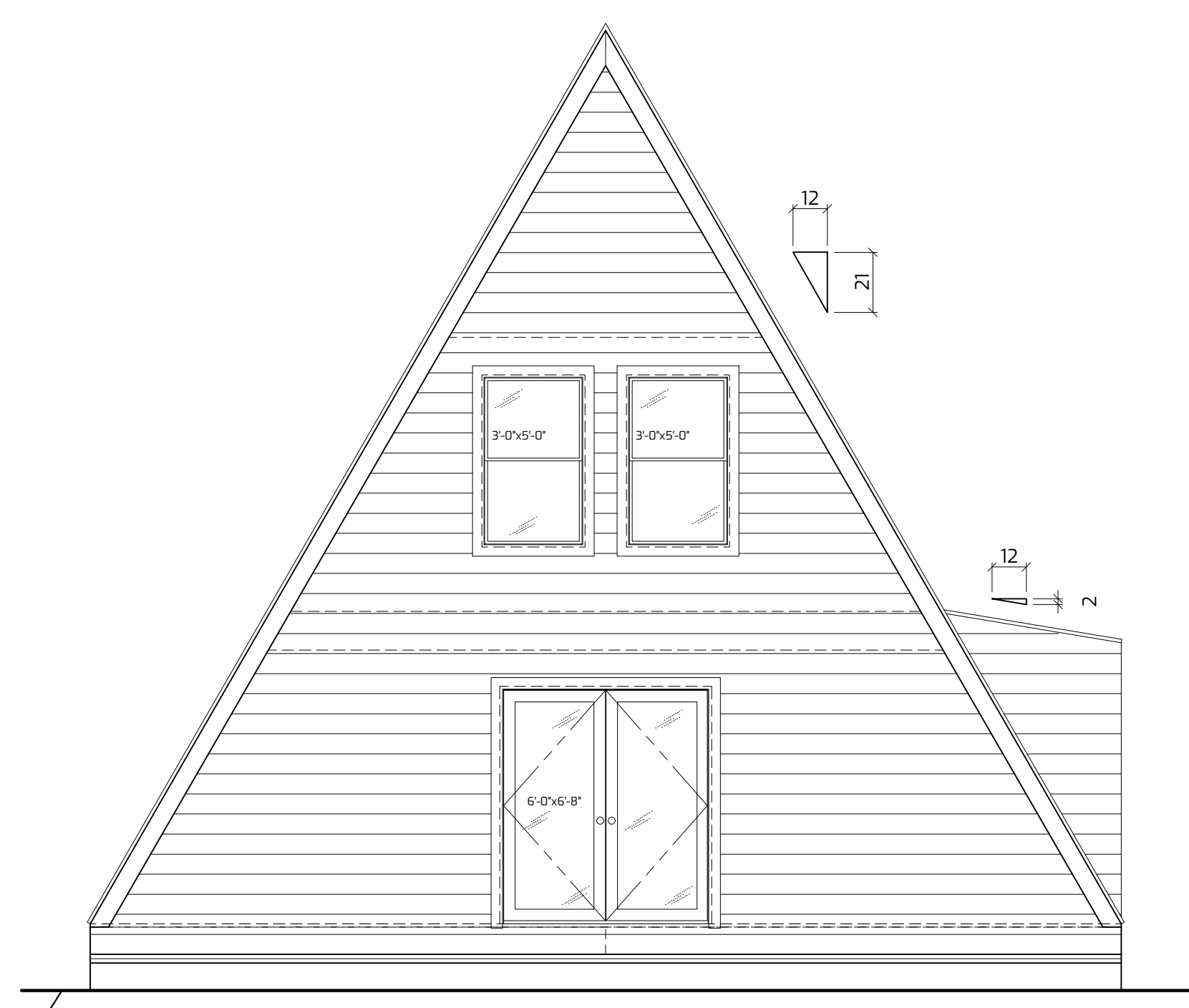
3. --- BASEMENT FLOOR PLAN
 SCALE: 1/4"=1'

THE STAIR MAY NOT BE MOVED SIDE TO SIDE ON THE PLANS. THE STAIR MUST REMAIN IN A DORMER BUT MAY MOVE IN 2' INCREMENTS TOWARD OR AWAY FROM THE GABLE WALLS.

2x4 WALL DOWN THE CENTER OF THE HOME IS TYPICAL FOR SUPPORT. POST AND BEAM OPTION IS AVAILABLE BUT REQUIRES ADDITIONAL ENGINEERING. IF POST CENTER LINE SPAN EXCEEDS 9' PRICING AVAILABLE UPON BID.



2. REAR EXTERIOR ELEVATION
 SCALE: 1/4"=1'



1. FRONT EXTERIOR ELEVATION
 SCALE: 1/4"=1'

TRIO 75 W/ BASEMENT

DRAWN FOR ONE-TIME USE FOR
AVRAME U.S.A.

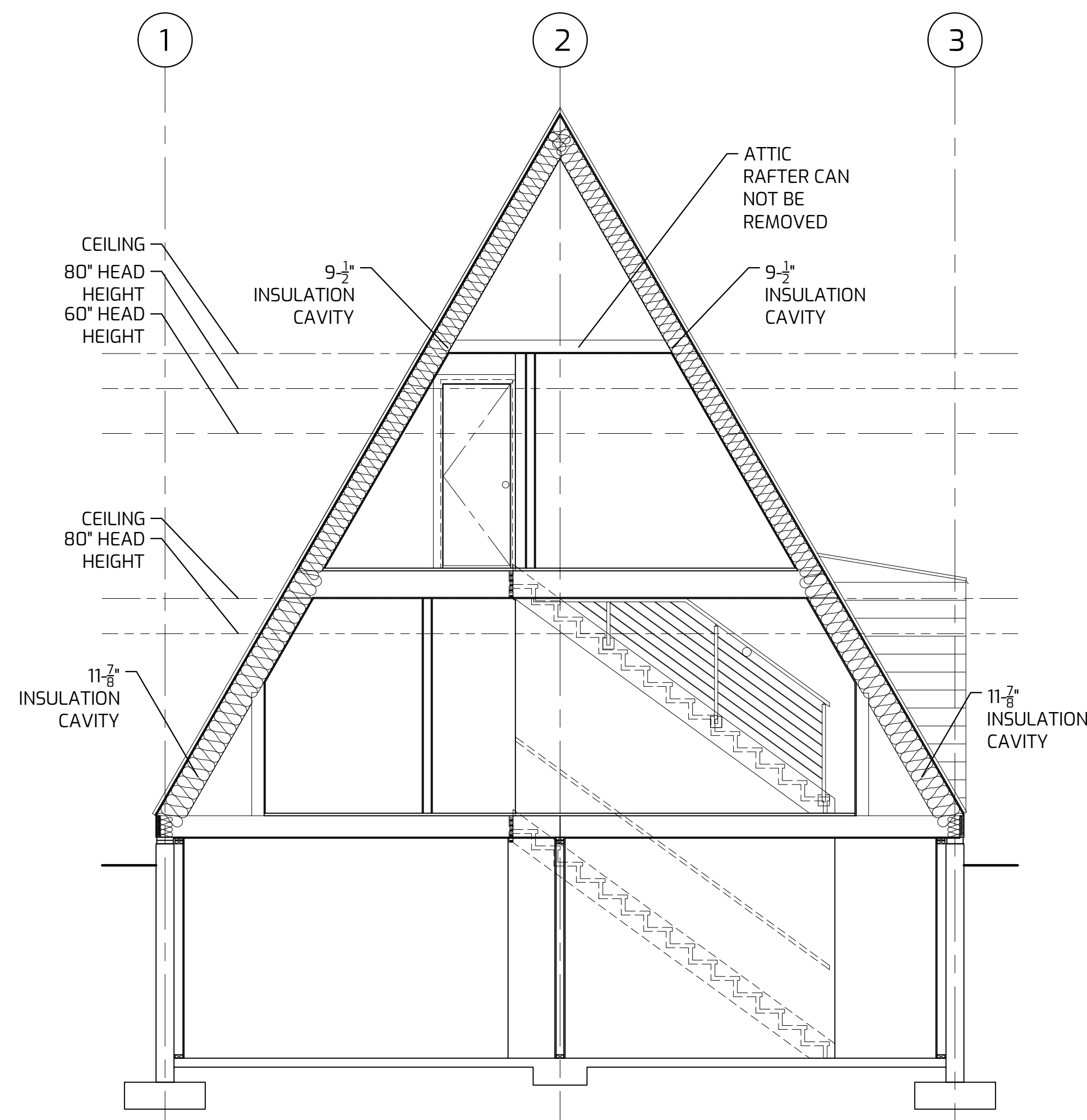
ISSUE DATE 04/15/2021

REVISIONS

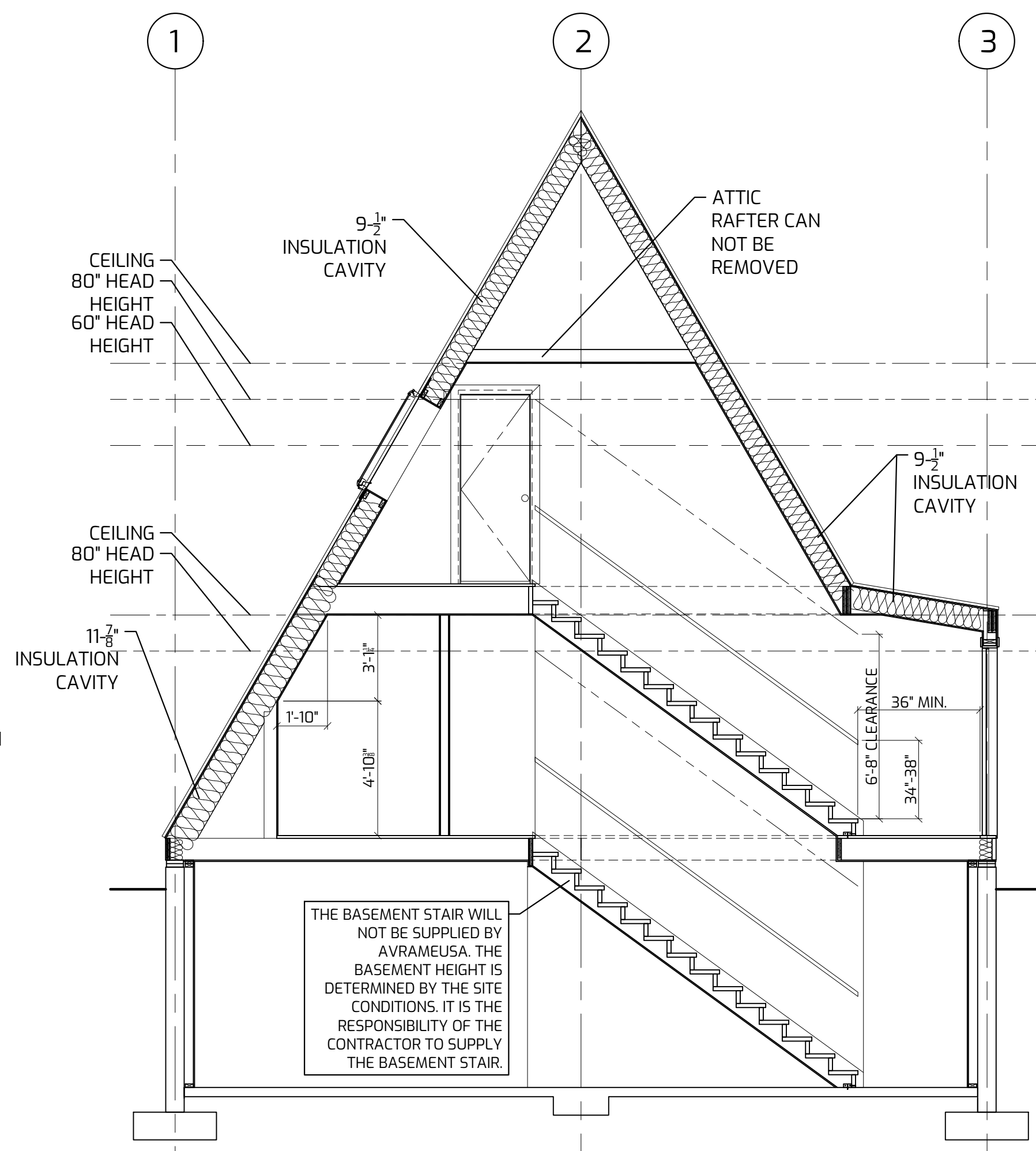
REVISION DELTA 

ID4.2

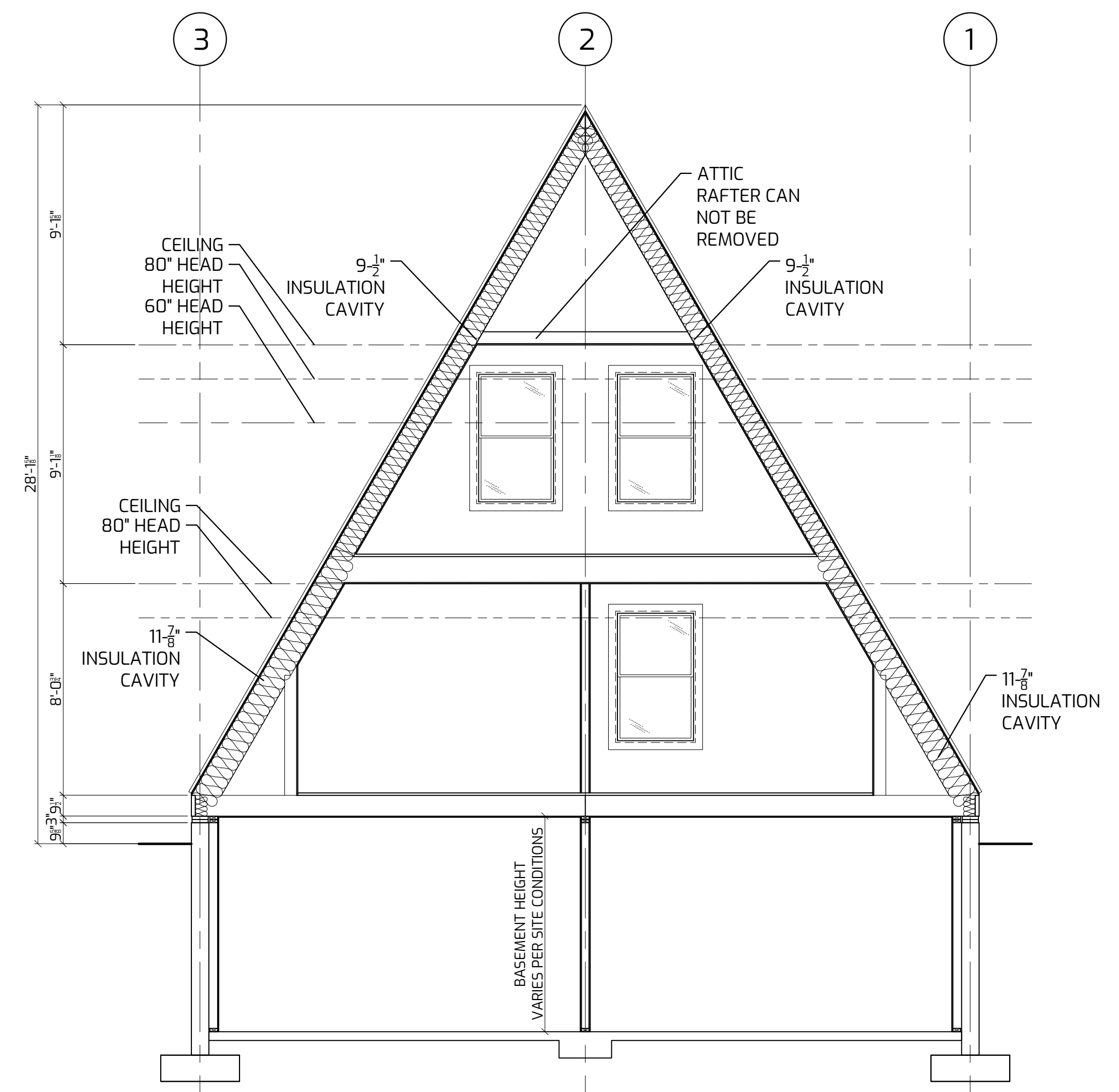
SECTIONS



5. --- BUILDING SECTION W/ STAIR ELEVATION
 SCALE: 1/4"=1'



4. --- STAIR SECTION
 SCALE: 1/4"=1'



3. --- BUILDING SECTION
 SCALE: 1/4"=1'