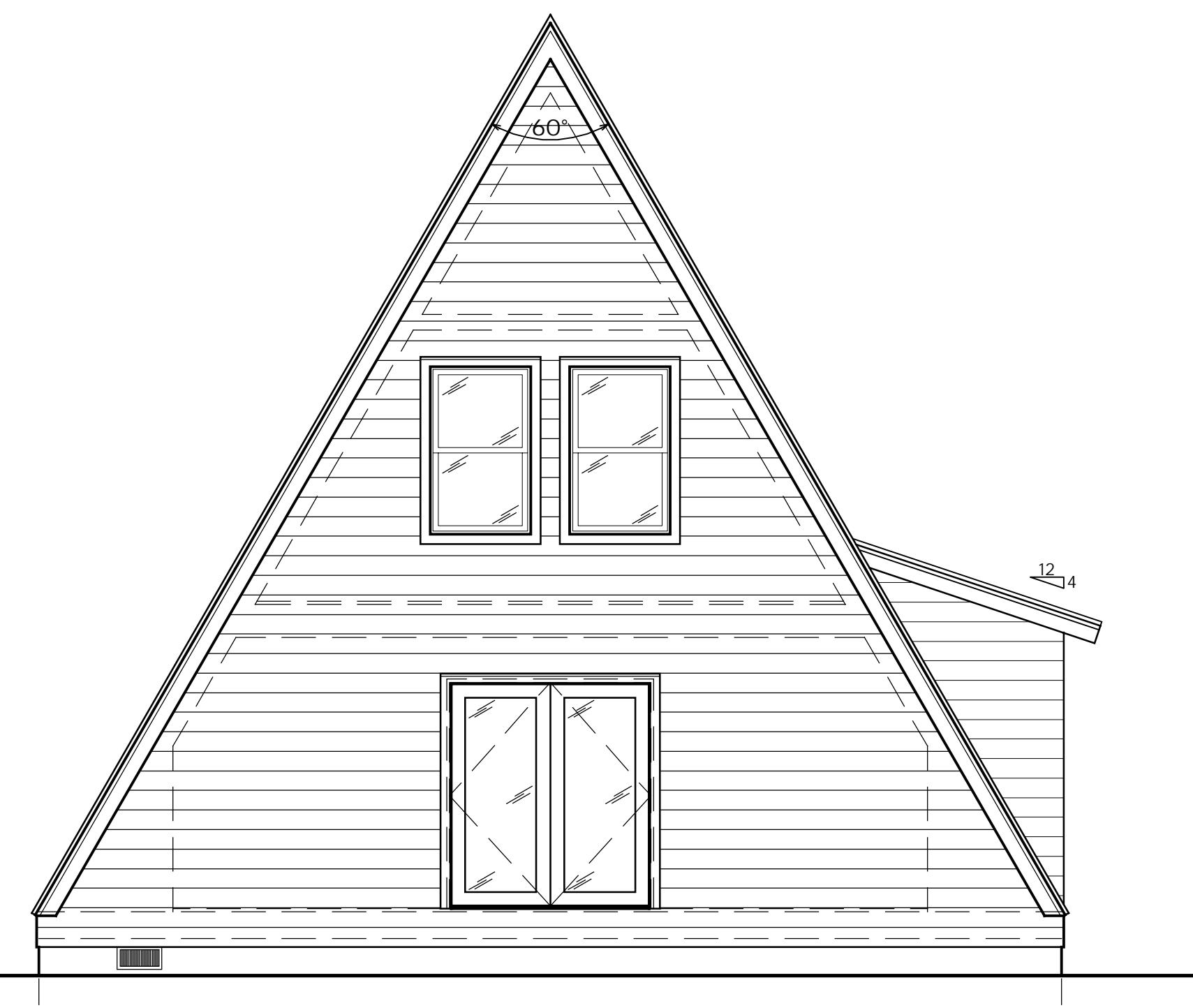
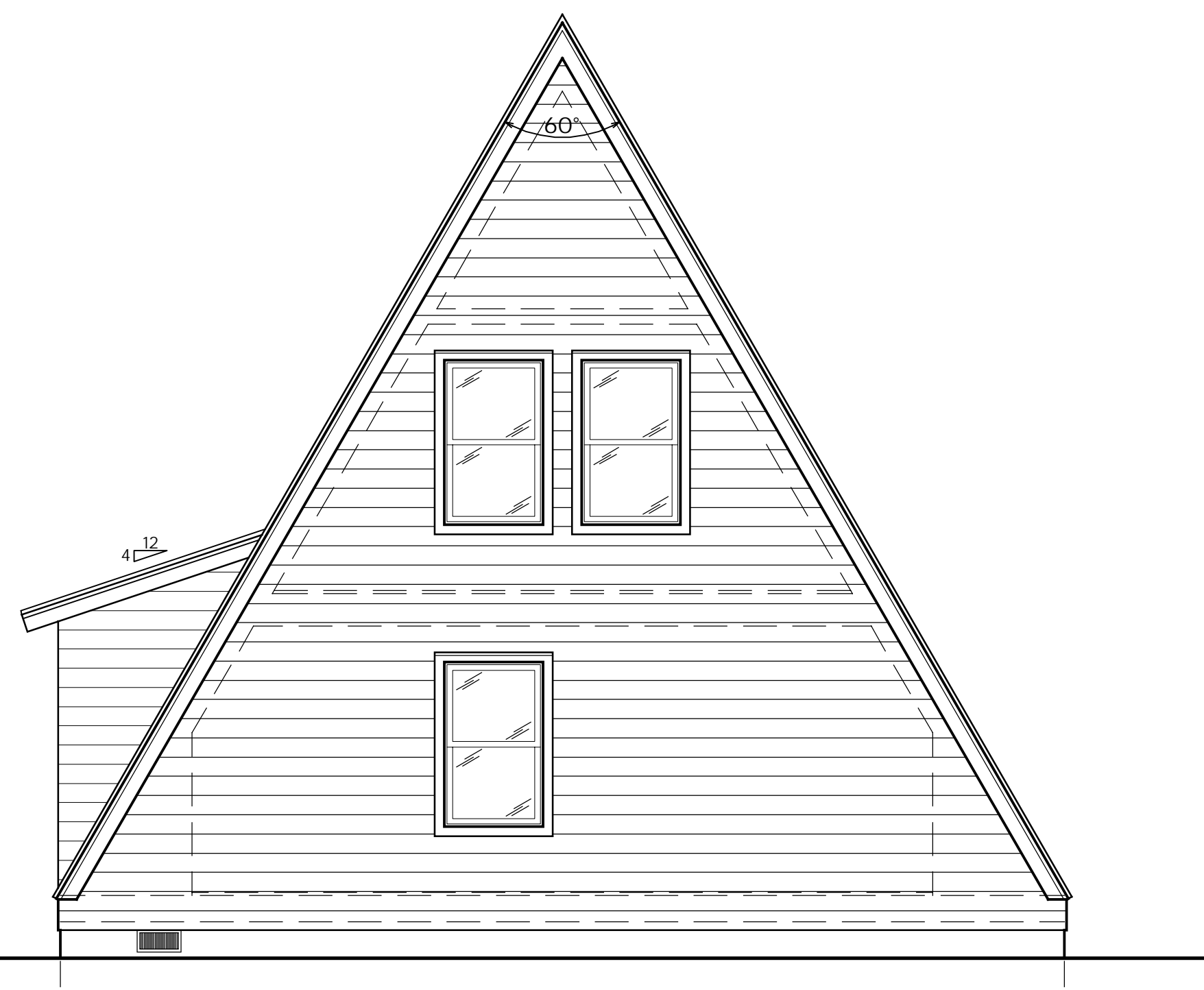
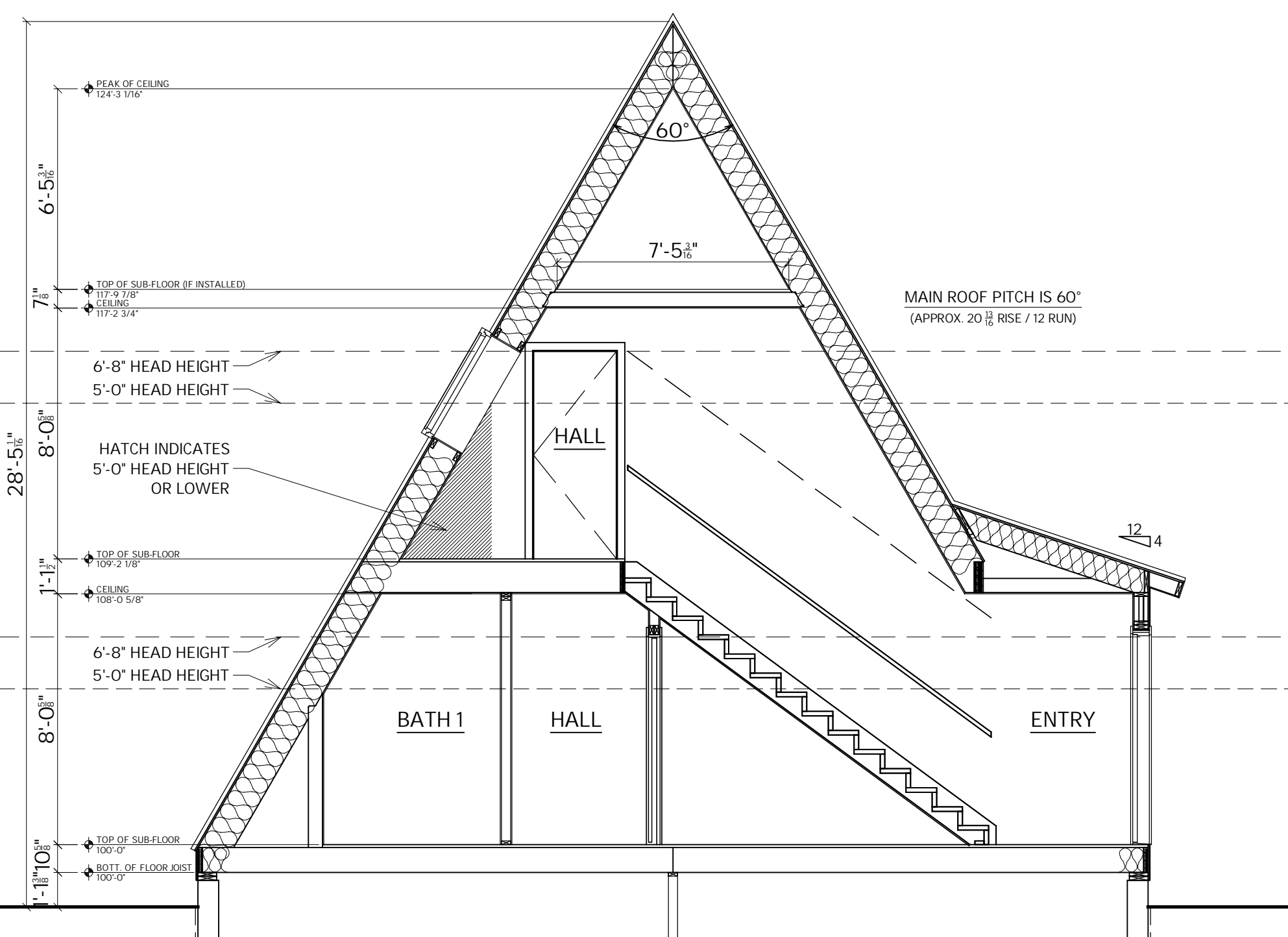
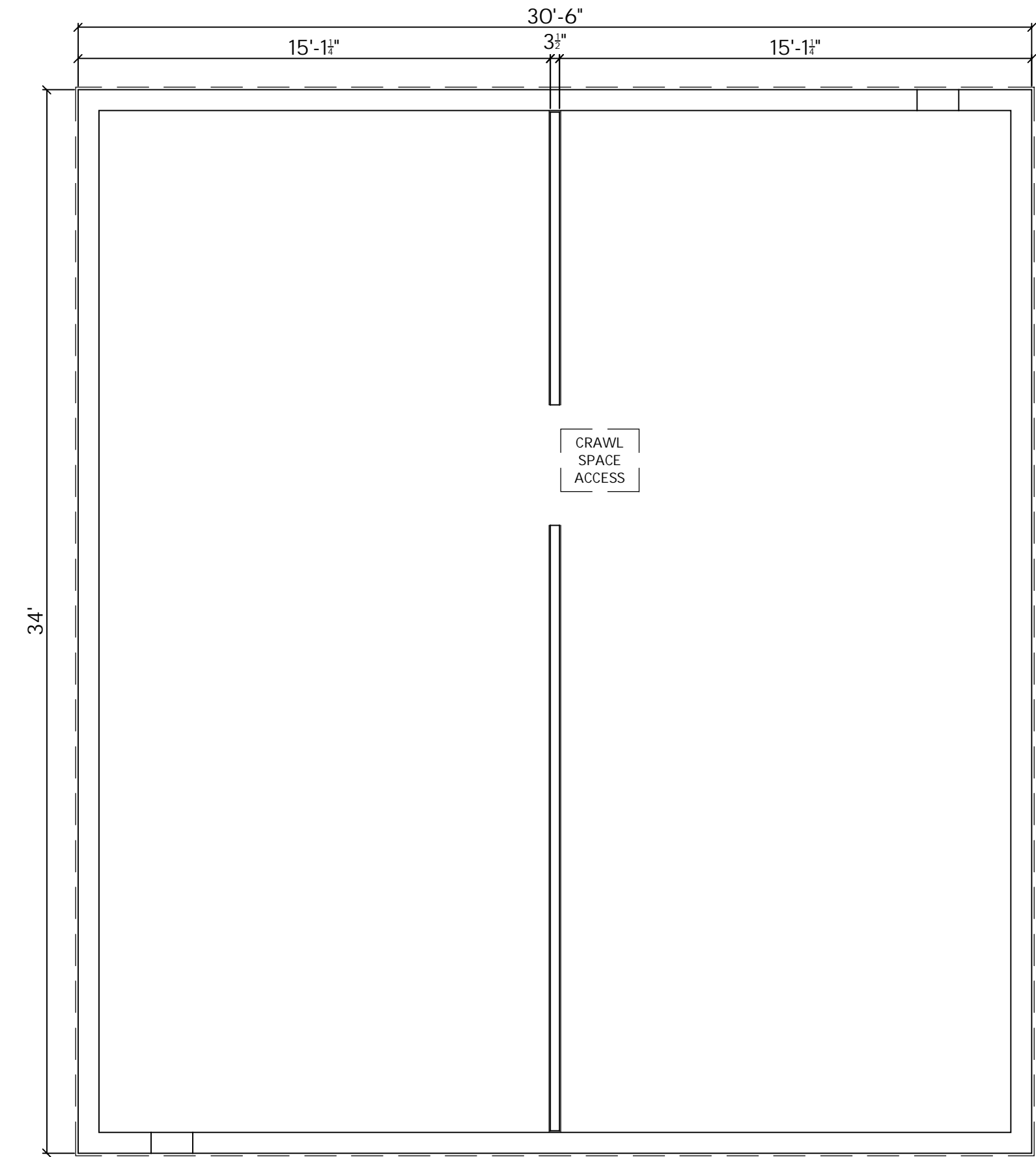
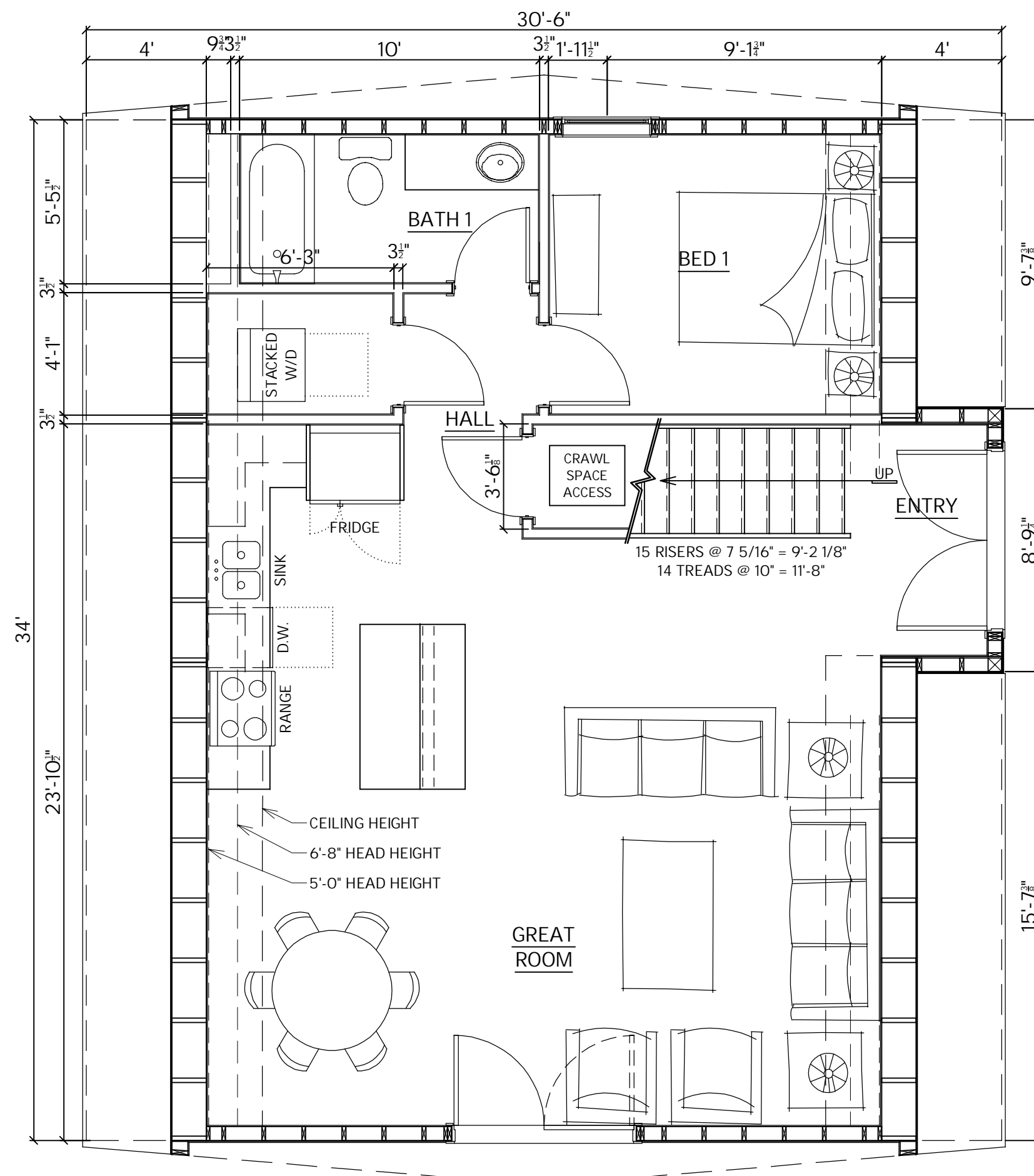
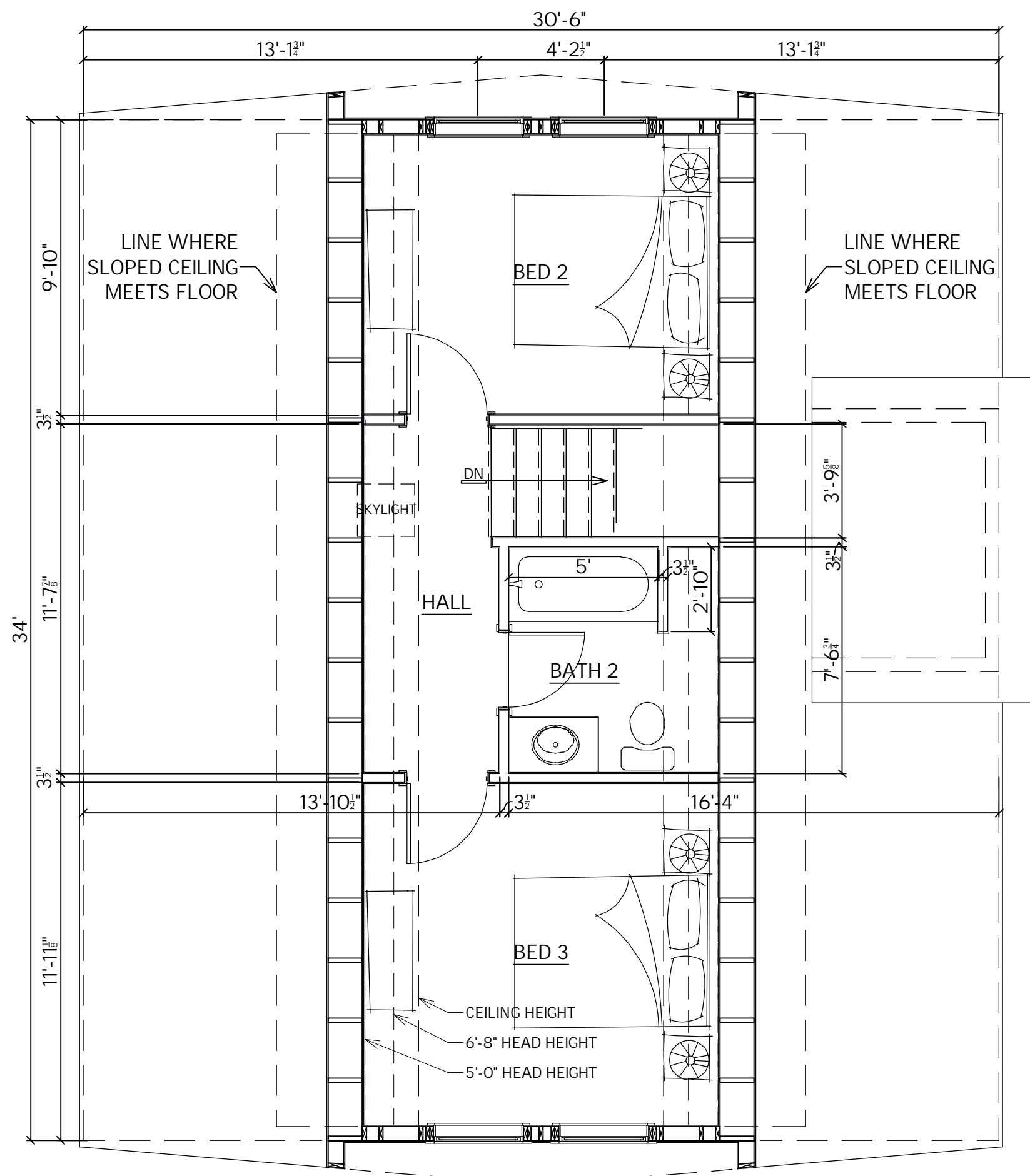


TRIO 100 - STRAIGHT STAIR

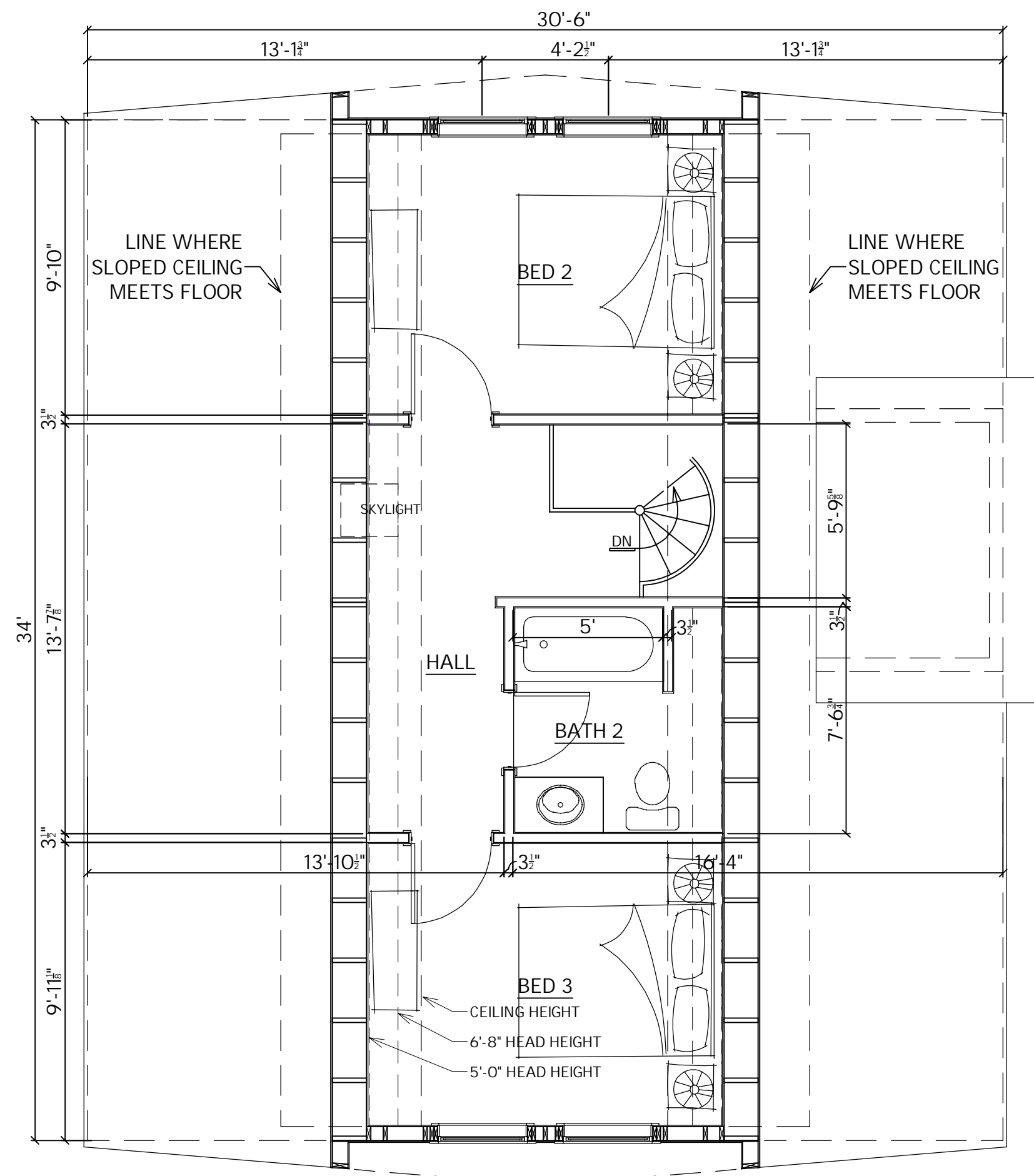
SQUARE FOOTAGE

LOWER LEVEL	-
MAIN LEVEL	795 SQ. FT.
UPPER LEVEL	399 SQ. FT.
TOTAL	1,194 SQ. FT.

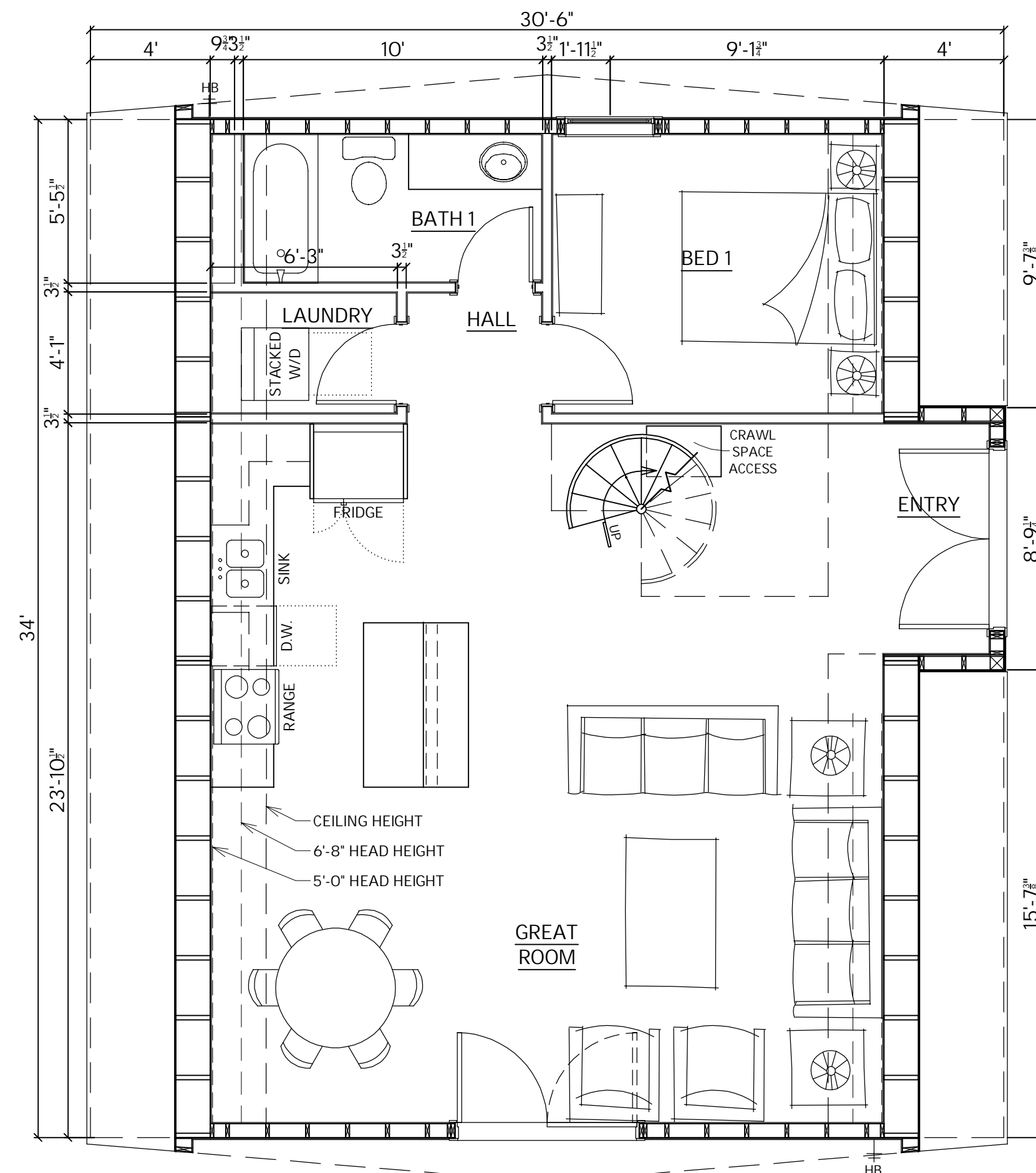
DATE 06/14/2022



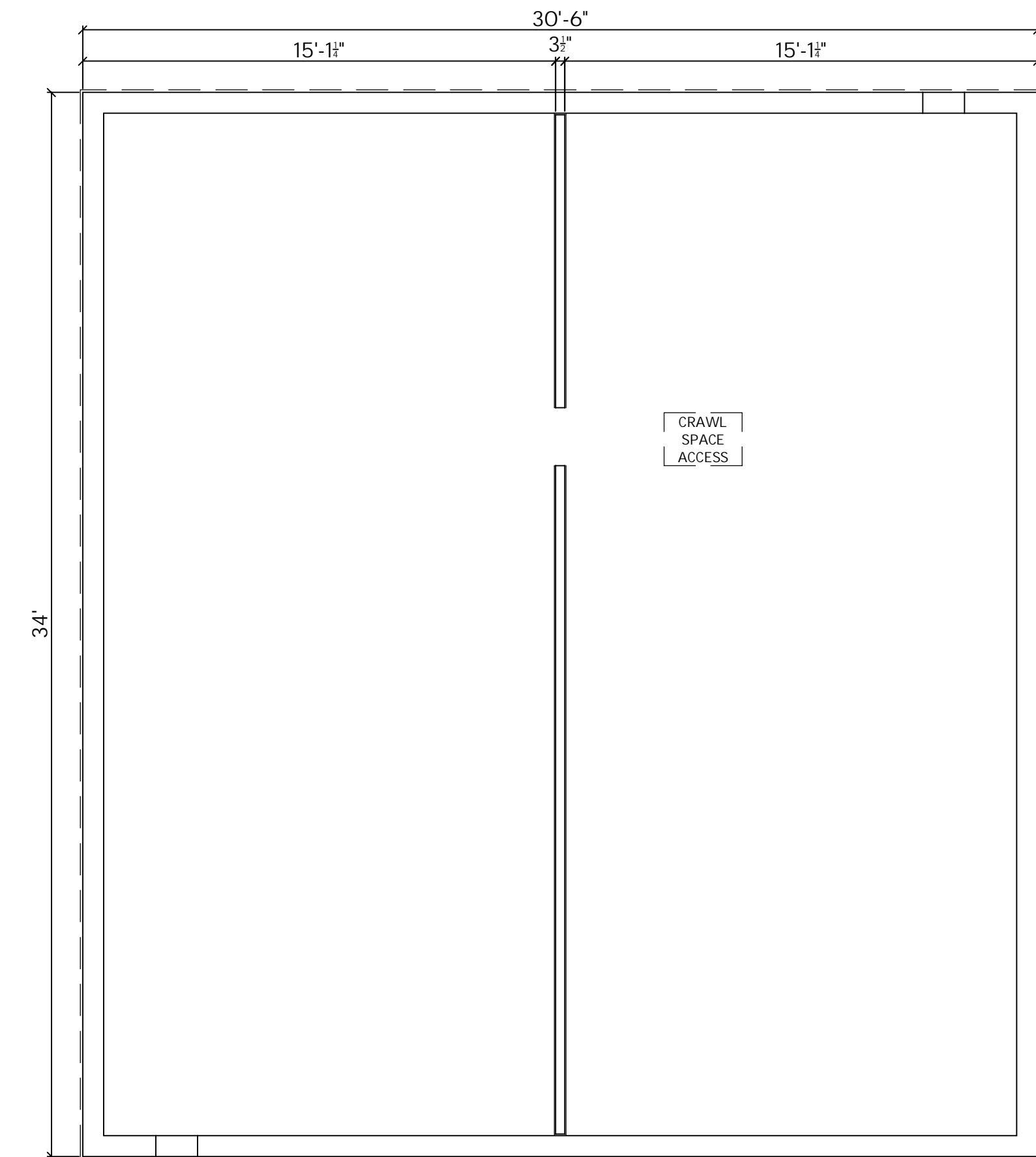
TRIO 100 - SPIRAL STAIR



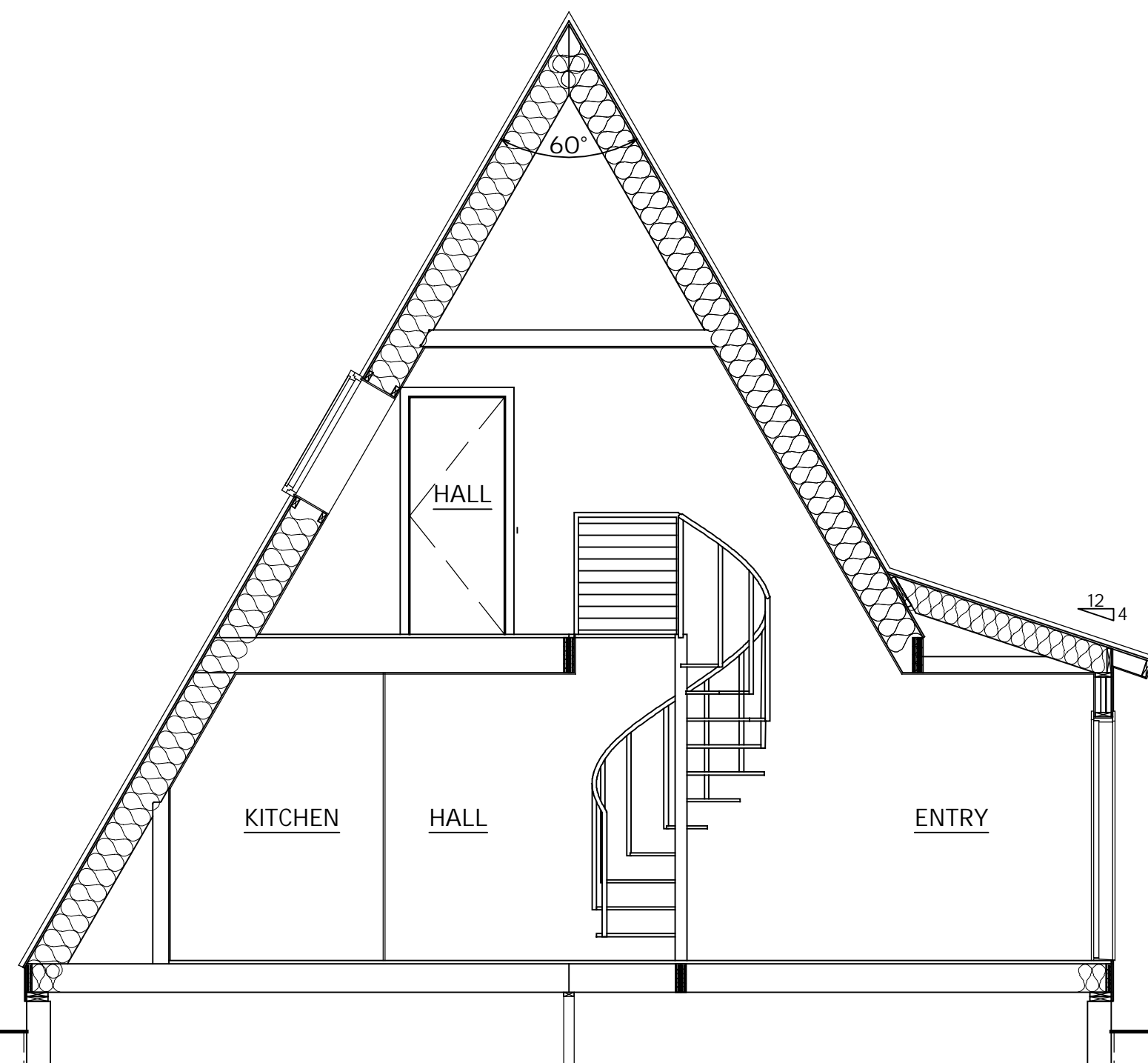
UPPER LEVEL FLOOR PLAN
 NOT TO SCALE



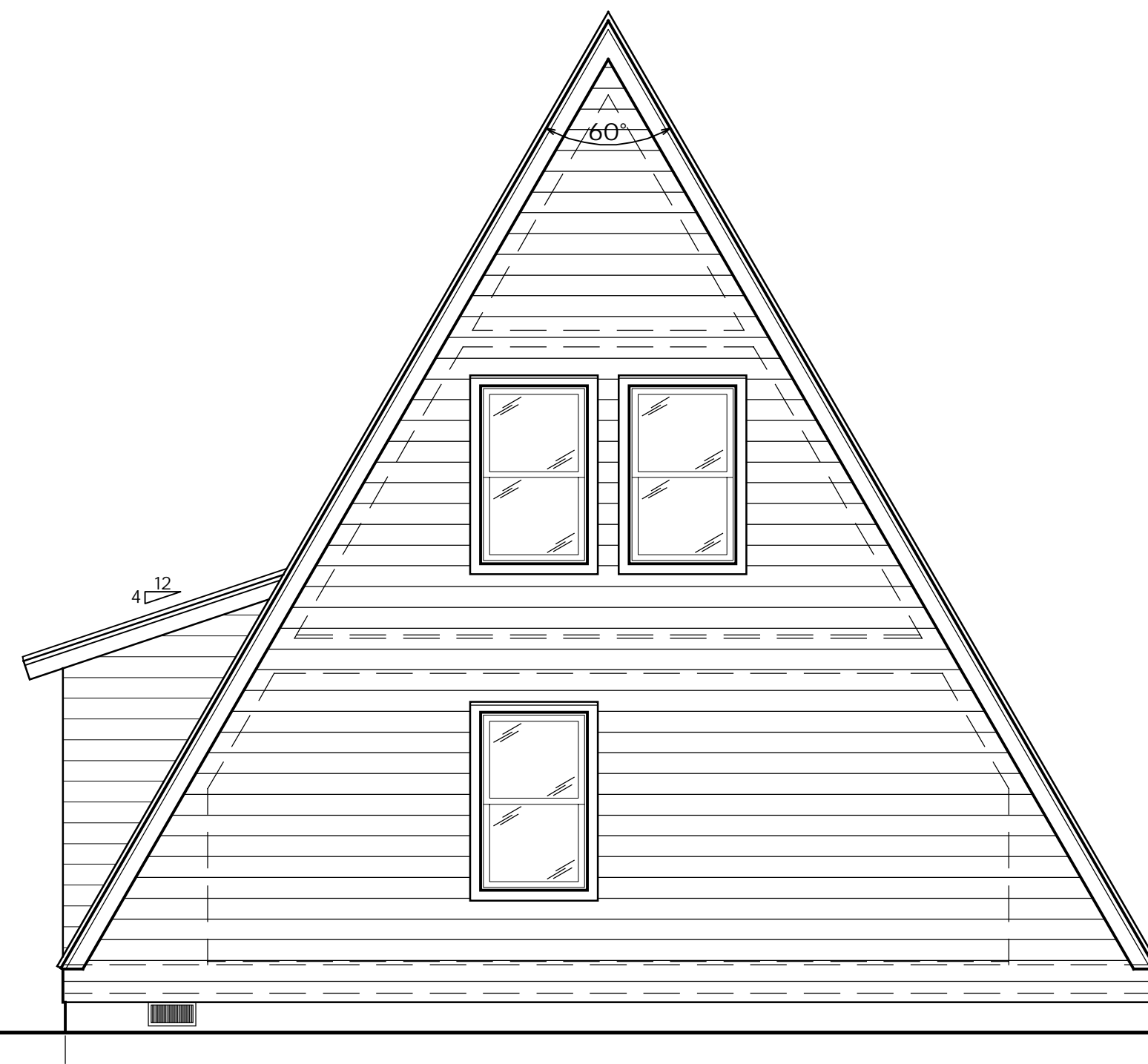
MAIN LEVEL FLOOR PLAN
 NOT TO SCALE



CRAWL SPACE PLAN
 NOT TO SCALE



BUILDING CROSS SECTION
 NOT TO SCALE



REAR ELEVATION
 NOT TO SCALE



FRONT ELEVATION
 NOT TO SCALE

SQUARE FOOTAGE

LOWER LEVEL	-
MAIN LEVEL	795 SQ. FT.
UPPER LEVEL	399 SQ. FT.
TOTAL	1,194 SQ. FT.

DATE 06/14/2022