

THE GRAPHIC MATERIAL AND DESIGN ON ALL SHEETS IN THIS SET REMAIN AT ALL TIMES THE PROPERTY OF AVRAME U.S.A. REPRODUCTION OR USE OF THE MATERIAL AND DESIGN CONTAINED HEREIN IS PROHIBITED WITHOUT THE WRITTEN CONSENT OF AVRAME U.S.A. ANY VIOLATION WILL BE PROSECUTED TO THE FULLEST EXTENT OF THE LAW. COPYRIGHT AVRAME U.S.A. ALL RIGHTS RESERVED.

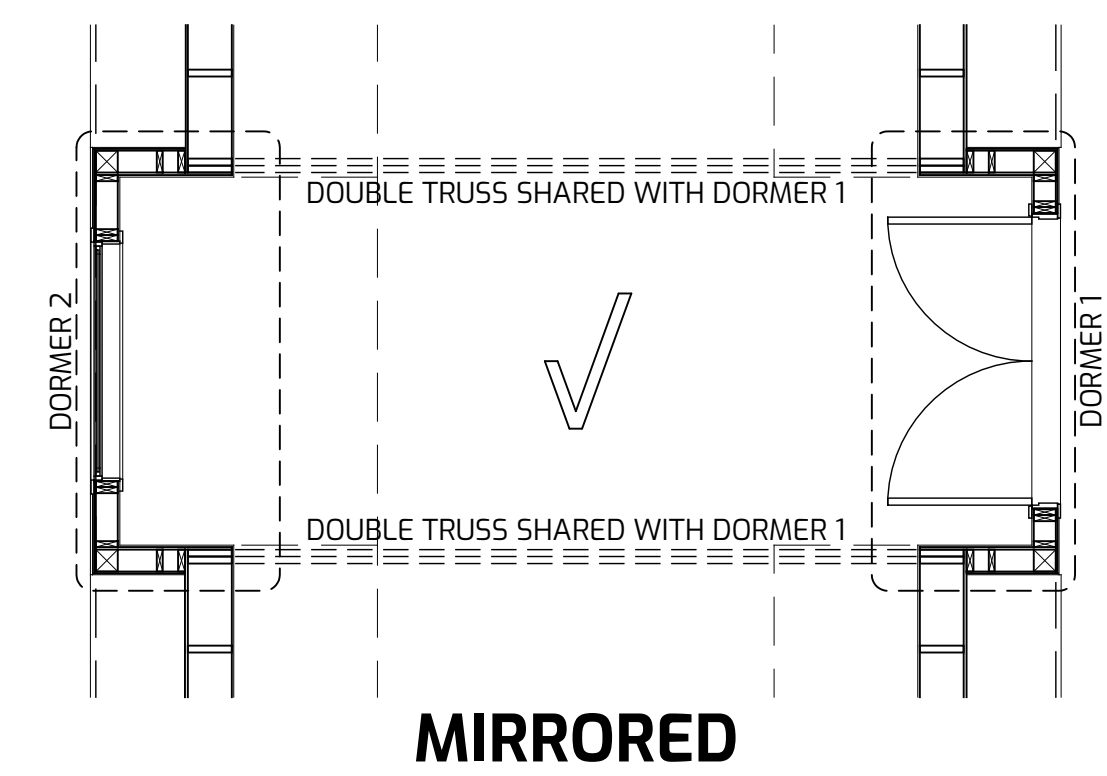
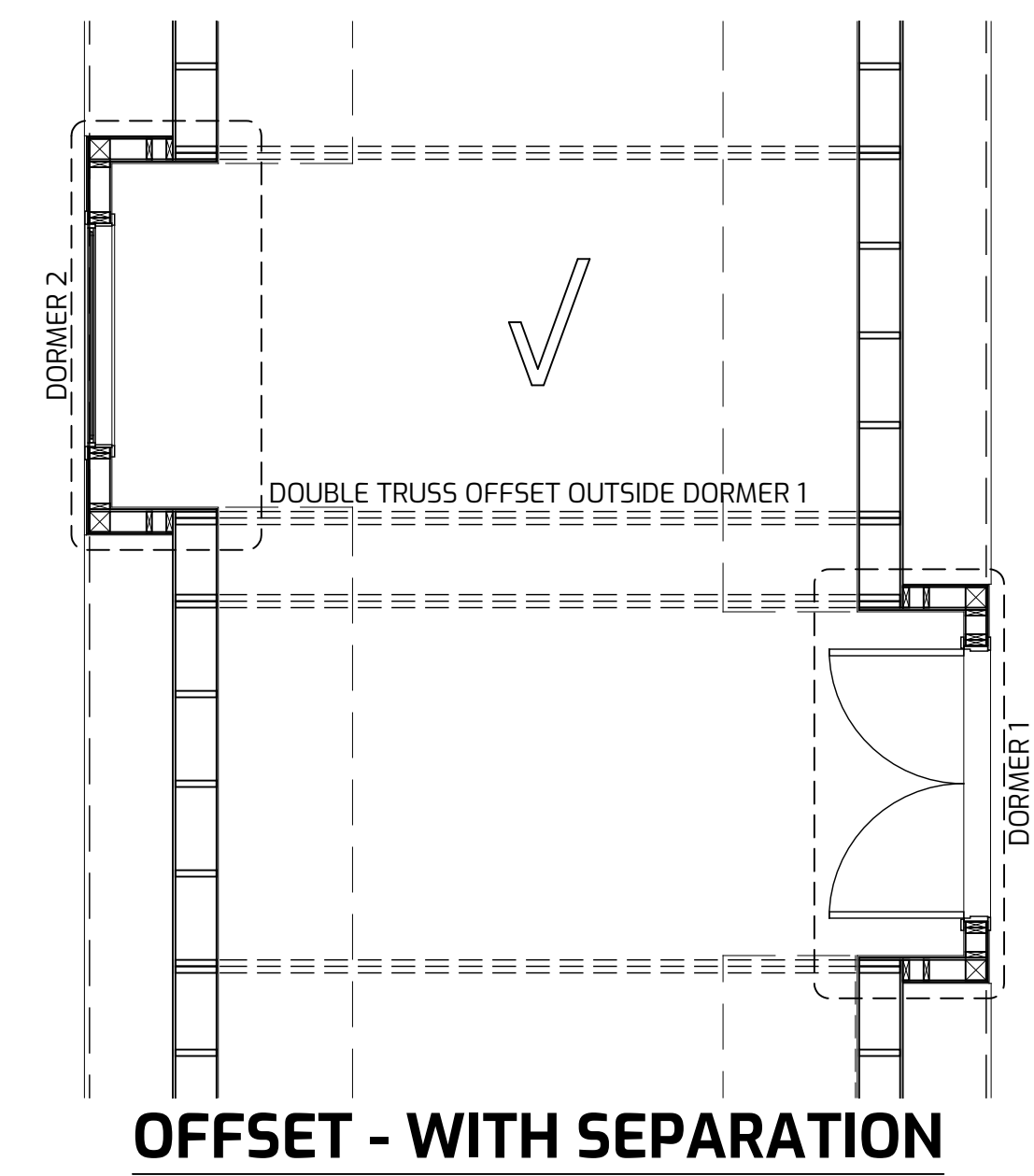
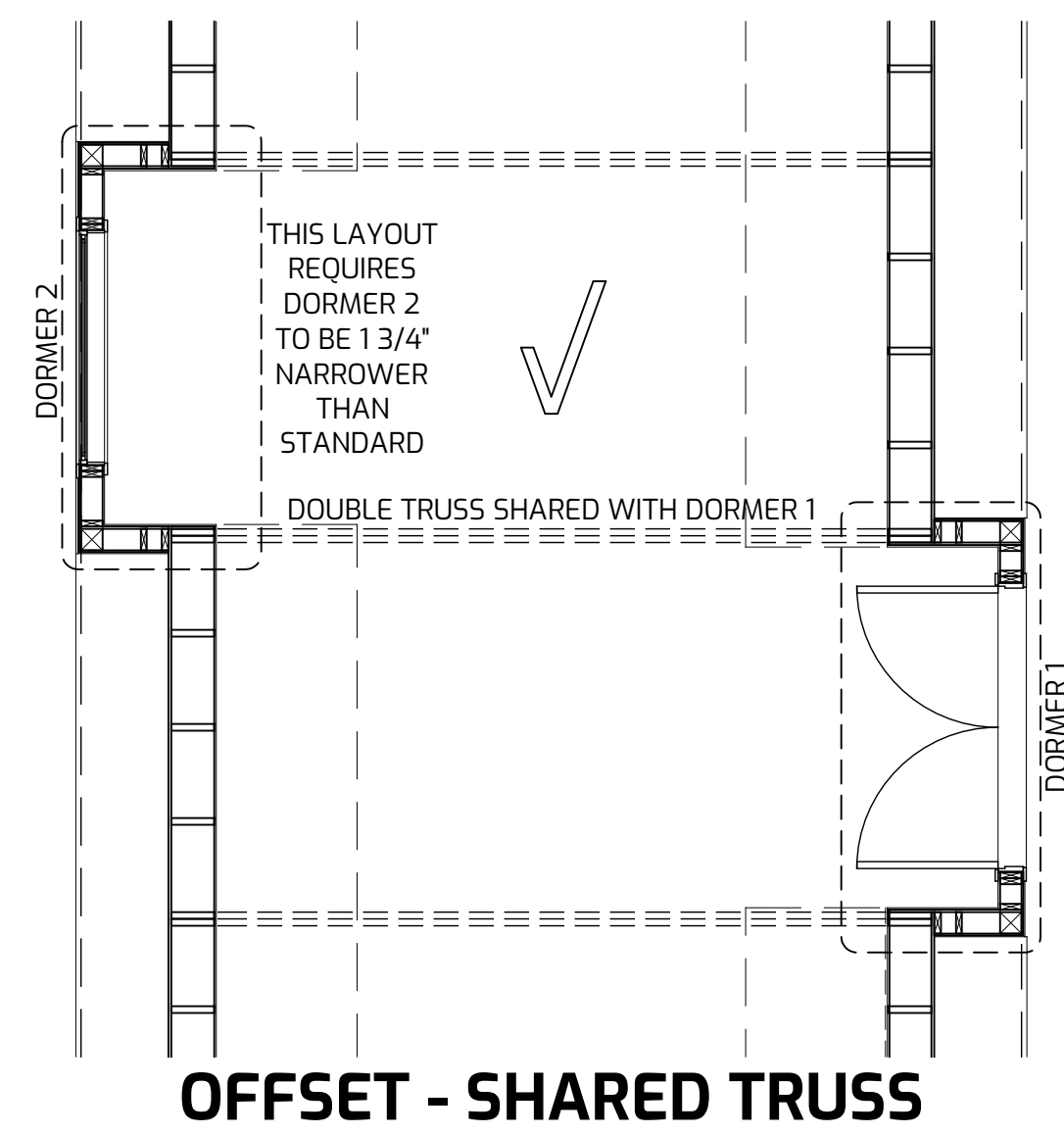
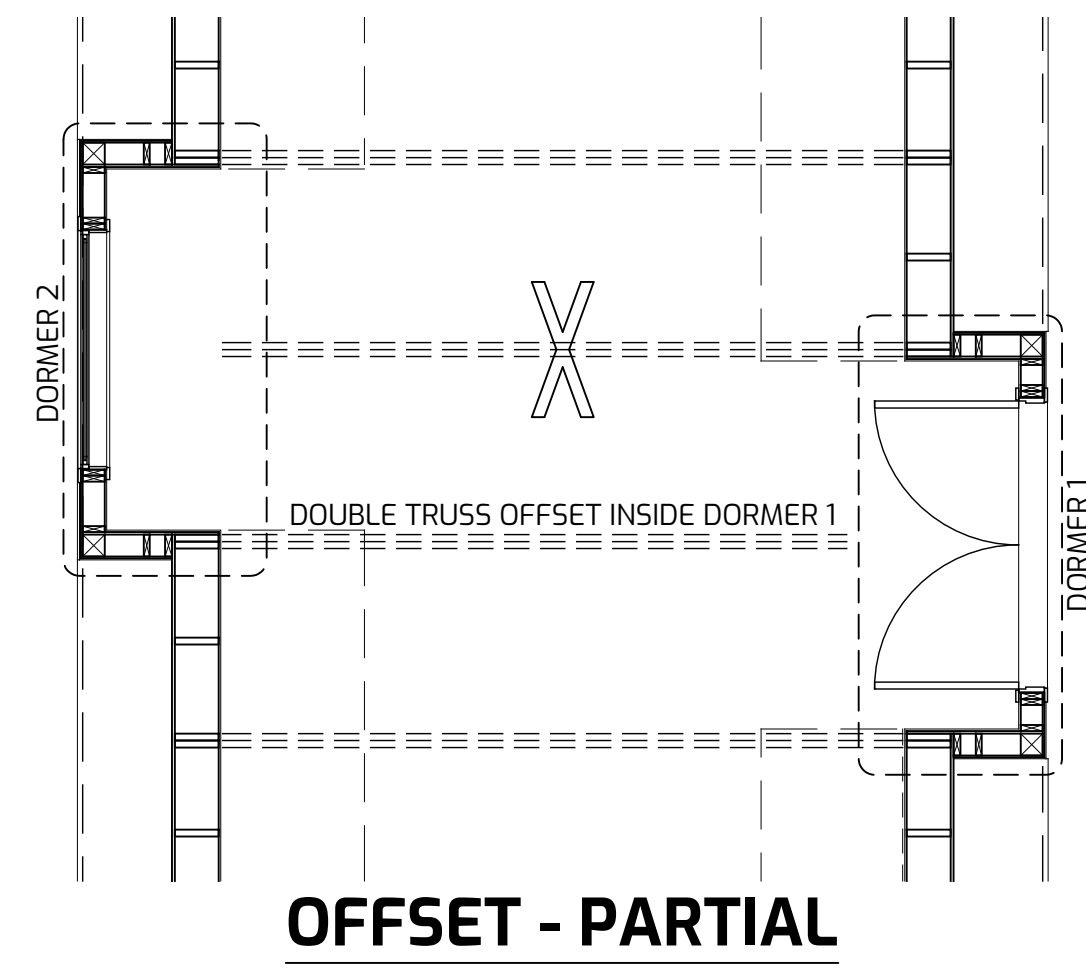
DUO - OPTIONS

DRAWN FOR ONE-TIME USE FOR
AVRAME U.S.A.

ISSUE DATE 07/01/2022

REVISIONS	
REVISION DELTA	▲

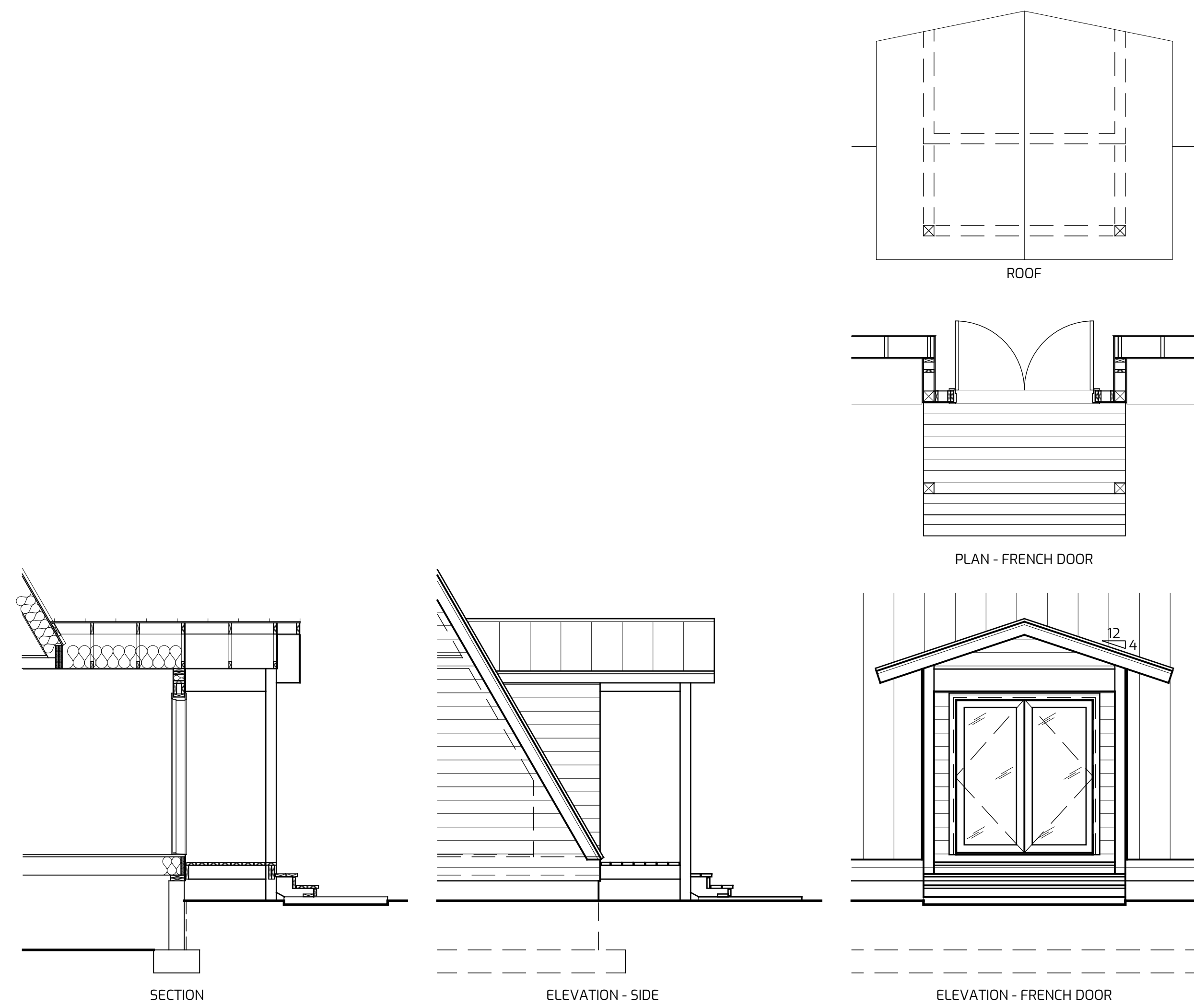
D2.1
 DORMER ALIGNMENT



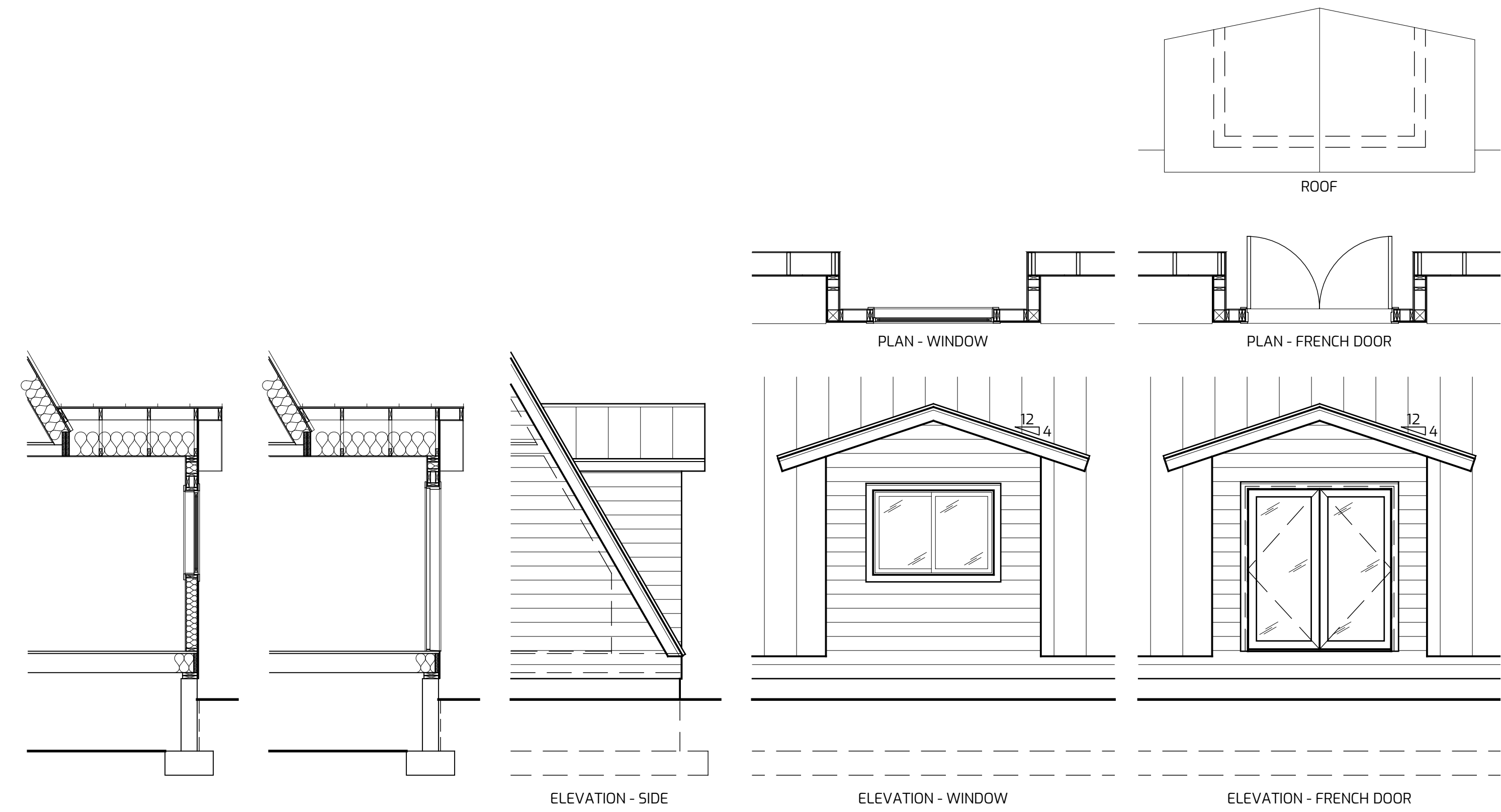
DORMERS SHOWN ARE ALL 4 TRUSS BAY (8' WIDE) DORMERS. EACH STYLE CAN ALSO BE DONE AS 5 TRUSS BAY (10' WIDE) DORMERS.

THE GRAPHIC MATERIAL AND DESIGN ON ALL SHEETS IN THIS SET REMAIN THE PROPERTY OF AVRAME U.S.A. ANY REPRODUCTION OR REUSE OF THE MATERIAL AND DESIGN CONTAINED HEREIN IS PROHIBITED WITHOUT THE WRITTEN CONSENT OF AVRAME U.S.A. ANY VIOLATION WILL BE PROSECUTED TO THE FULLEST EXTENT OF THE LAW. COPYRIGHT AVRAME U.S.A. ALL RIGHTS RESERVED.

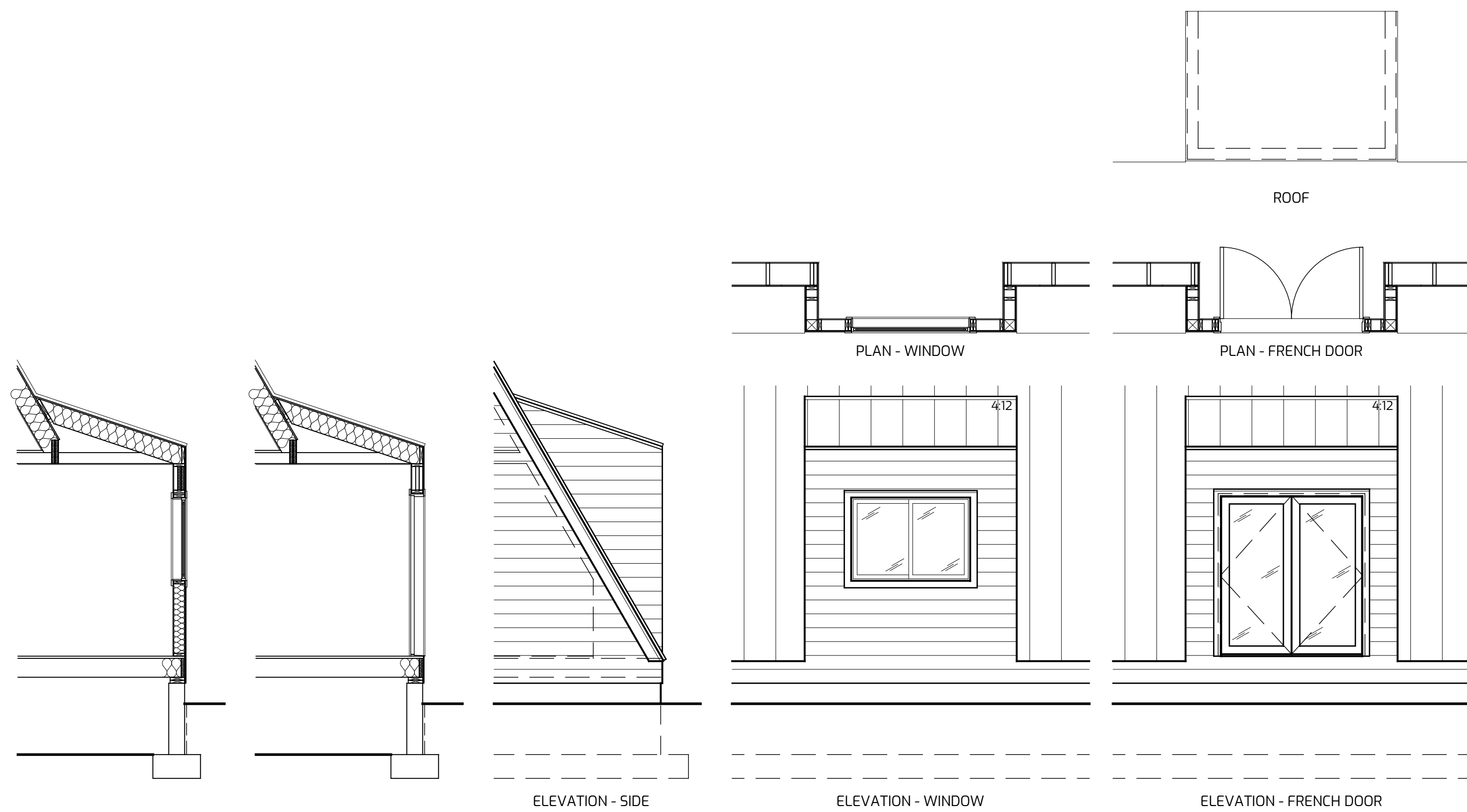
DUO - OPTIONS



MAIN LEVEL - FULL DORMER - EXTENDED GABLED ROOF W/ DECK

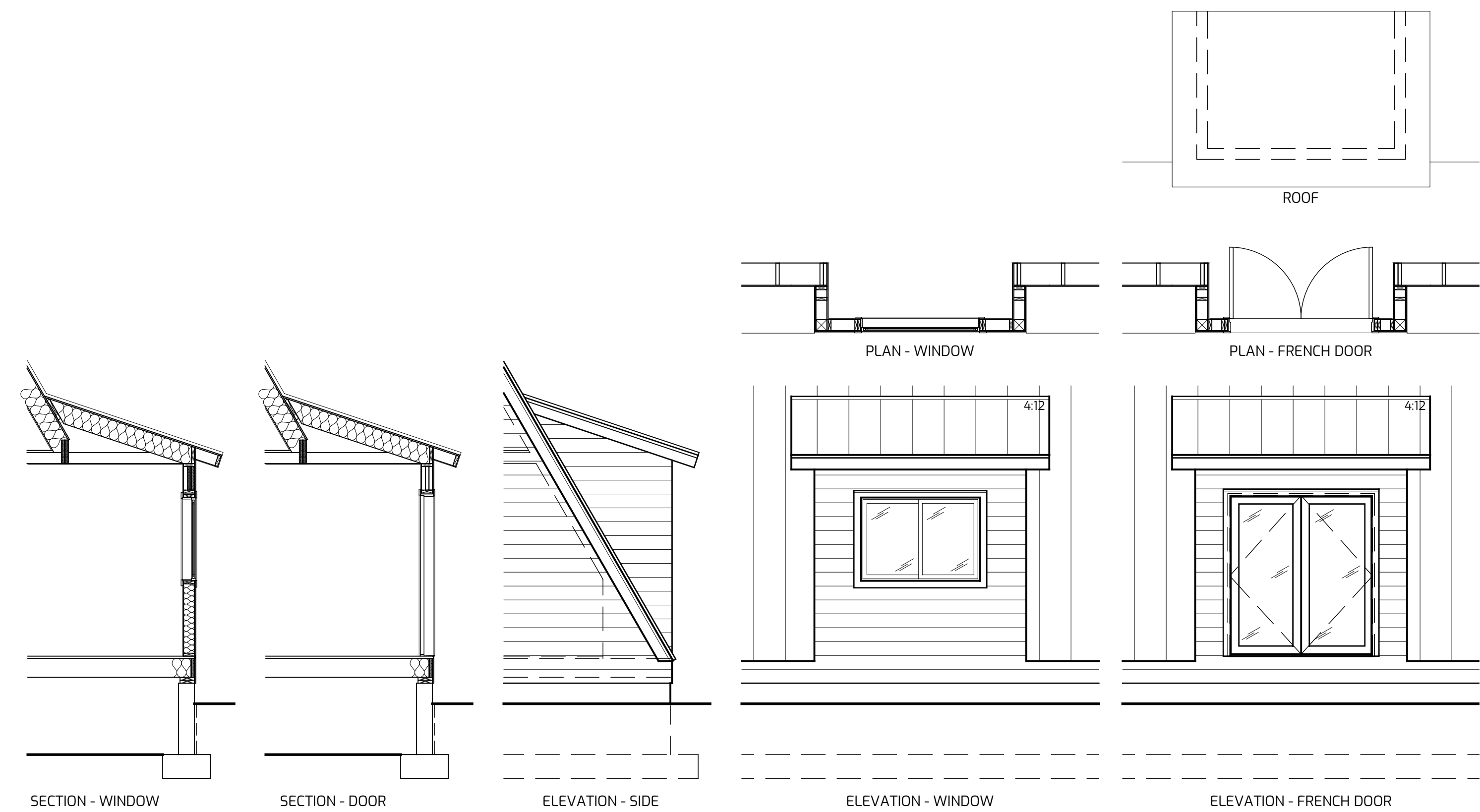


MAIN LEVEL - FULL DORMER - GABLED ROOF



MAIN LEVEL - FULL DORMER - SHED ROOF NO OVERHANG

RAFTER TAILS MUST BE CUT OFF ON SITE



MAIN LEVEL - FULL DORMER - SHED ROOF W/ OVERHANG

DORMERS SHOWN ARE ALL 4 TRUSS BAY (8' WIDE) DORMERS. EACH STYLE CAN ALSO BE DONE AS 5 TRUSS BAY (10' WIDE) DORMERS.

DRAWN FOR ONE-TIME USE FOR

AVRAME U.S.A.

ISSUE DATE 07/01/2022

REVISIONS

REVISION DELTA

D2.2

FULL DORMER
 OPTIONS