

THE GRAPHIC MATERIAL AND DESIGN ON ALL SHEETS IN THIS ADVERTISING CAMPAIGN SHALL REMAIN AT ALL TIMES THE PROPERTY OF AVRAME U.S.A. NO REPRODUCTION OR REUSE OF THE MATERIAL AND DESIGN CONTAINED HEREIN IS PROHIBITED WITHOUT THE WRITTEN CONSENT OF AVRAME U.S.A. VIOLATORS WILL BE PROSECUTED TO THE FULLEST EXTENT OF THE LAW. COPYRIGHT AVRAME U.S.A. ALL RIGHTS RESERVED

DUO - OPTIONS

DRAWN FOR ONE-TIME USE FOR
AVRAME U.S.A.

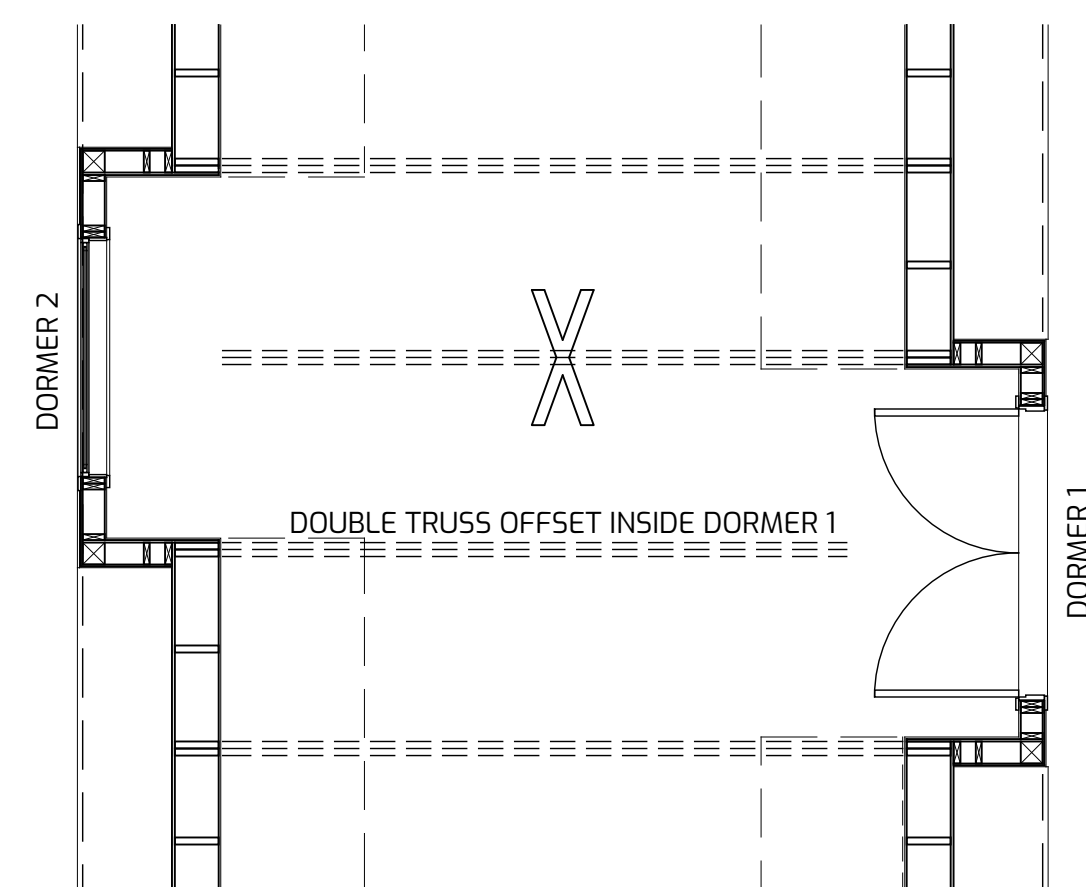
ISSUE DATE	04/20/2023
------------	------------

REVISIONS

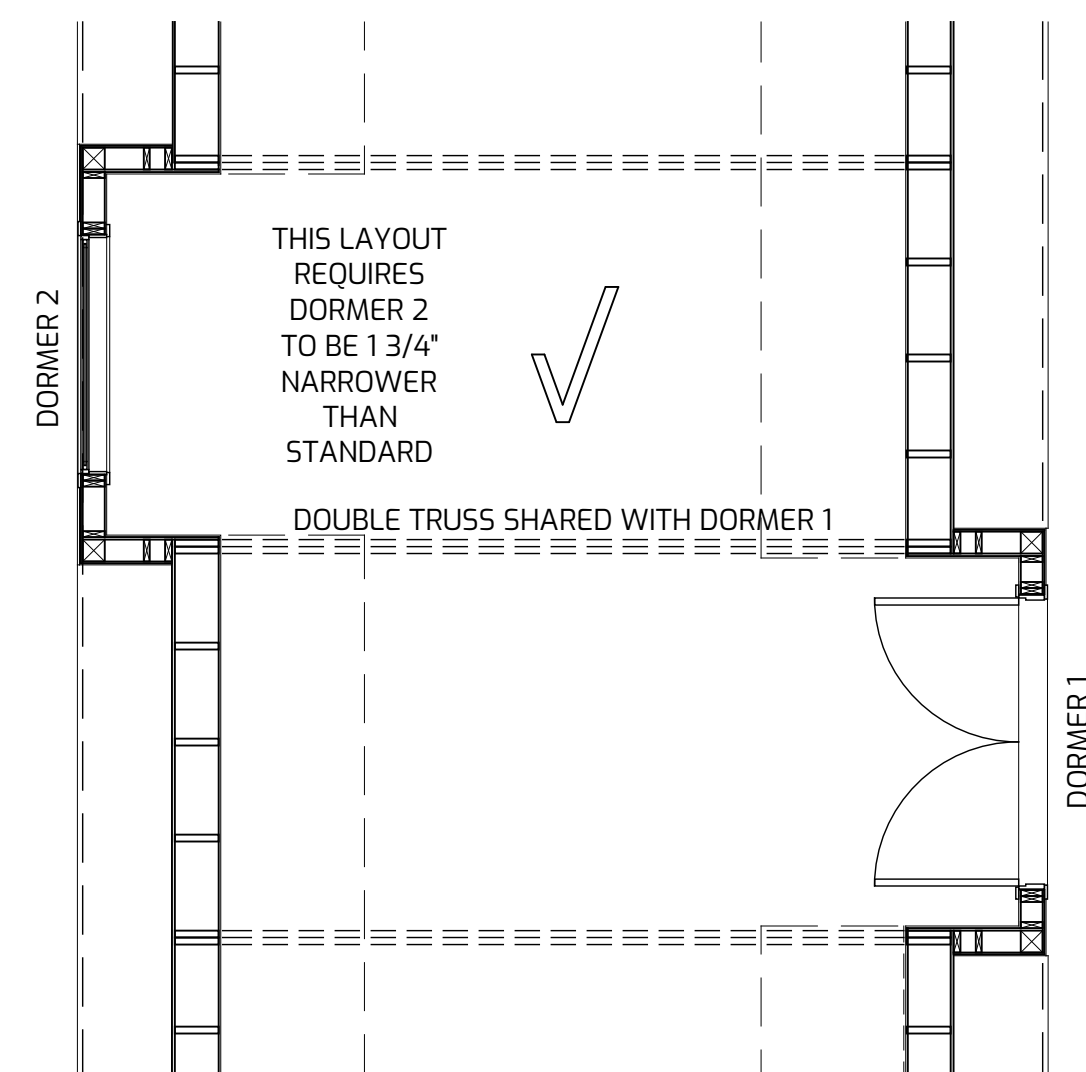
REVISION DELTA

D201

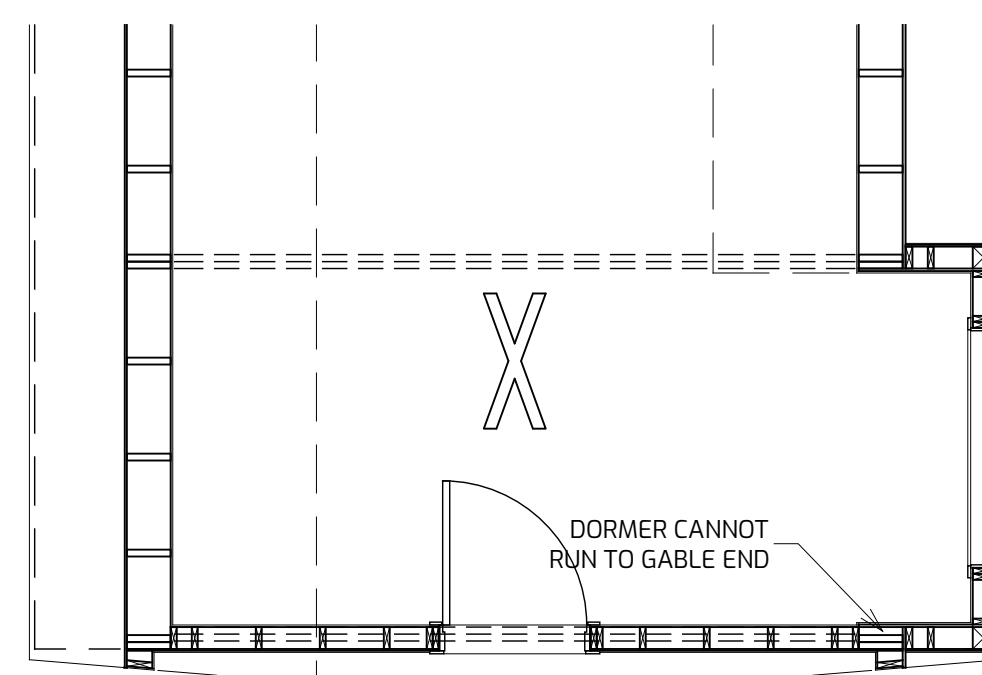
DORMER
ALIGNMENT



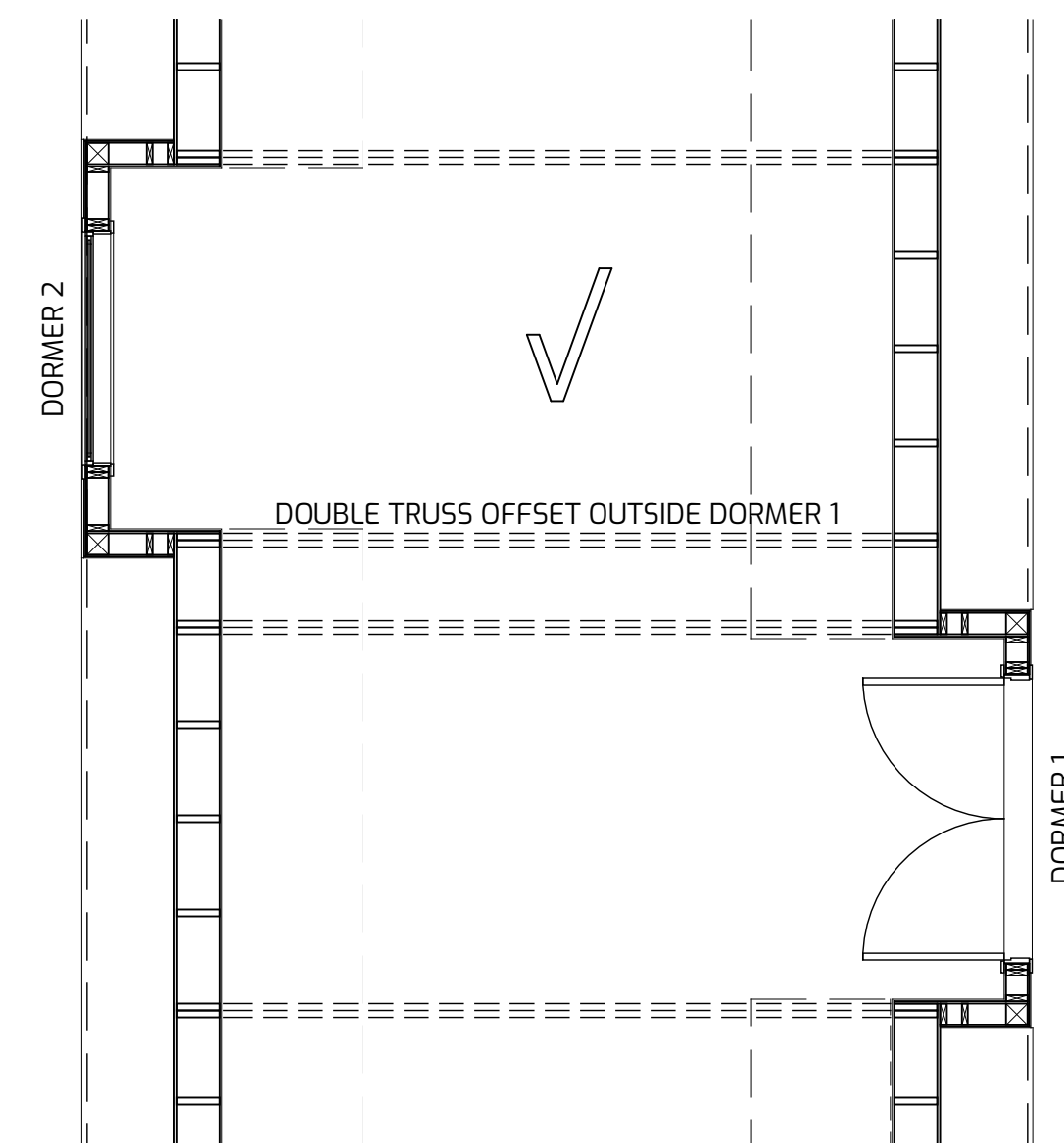
OFFSET - PARTIAL



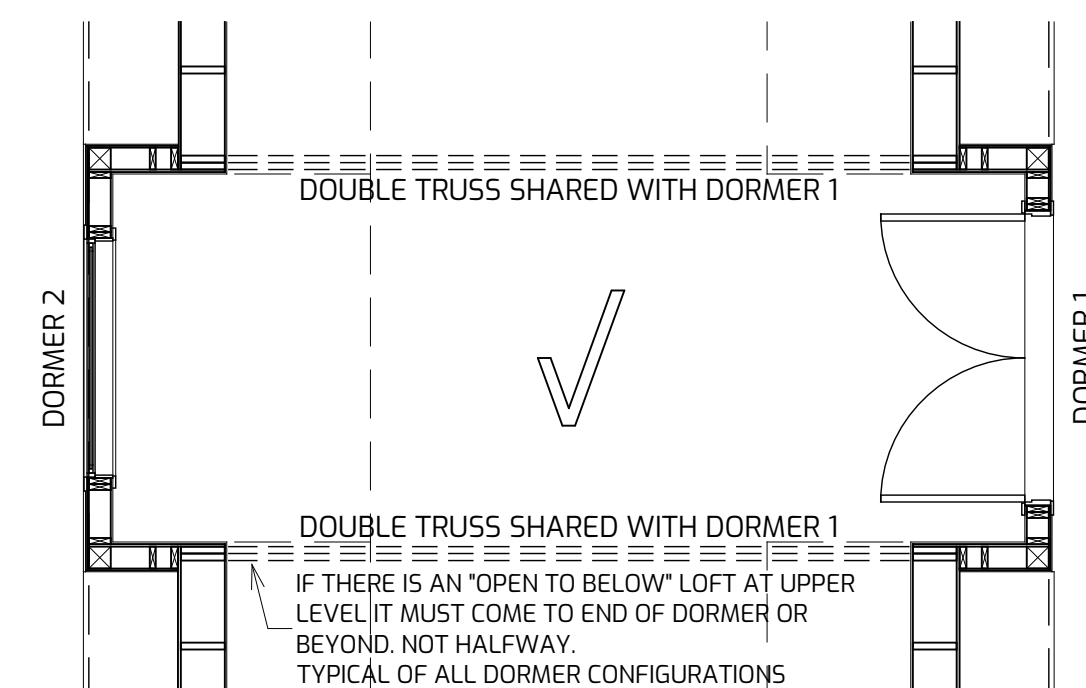
OFFSET - SHARED TRUSS



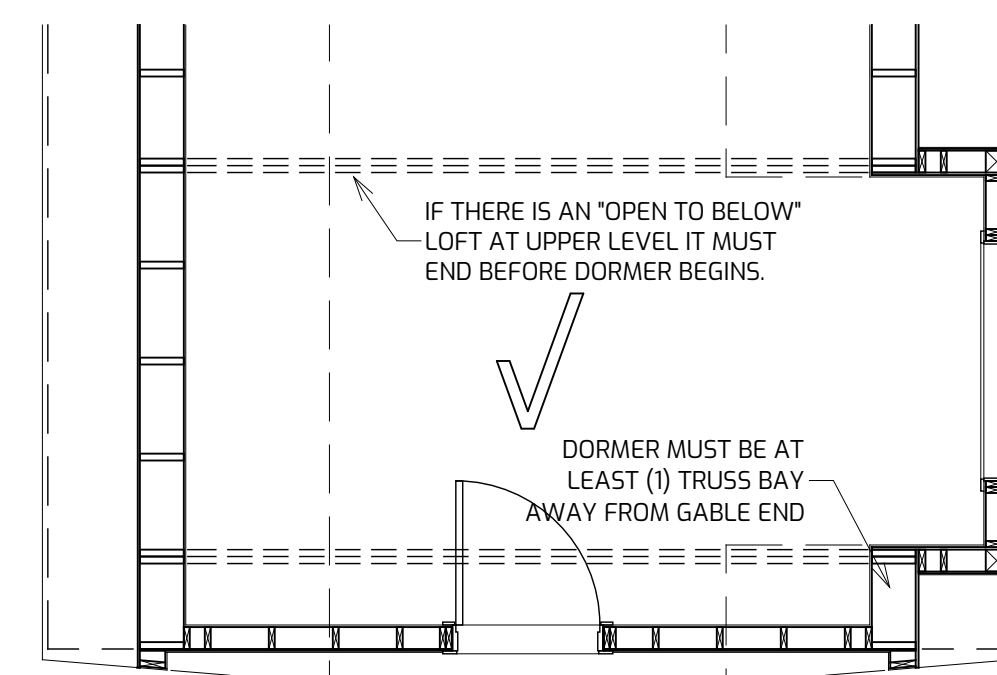
WITHOUT OFFSET FROM GABLED END



OFFSET - WITH SEPARATION



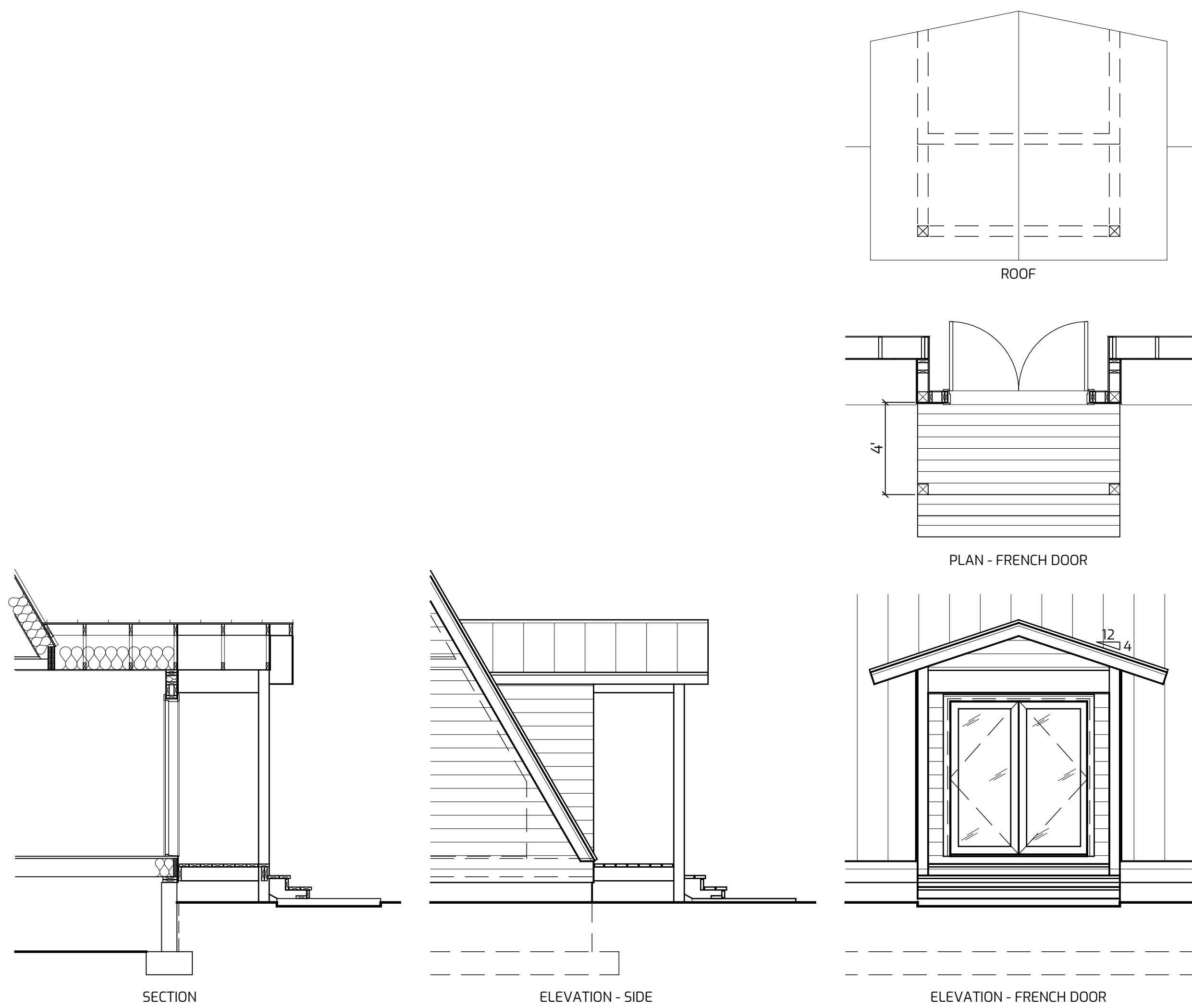
ADJACENT



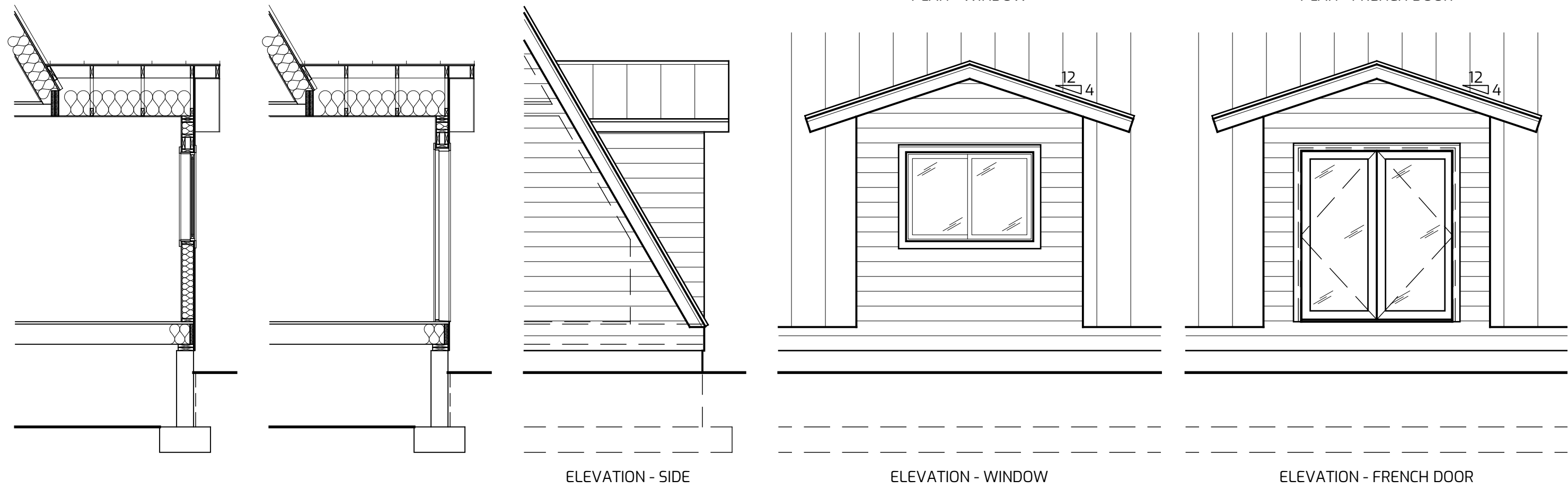
WITH OFFSET FROM GABLED END

DORMERS SHOWN ARE ALL 4 TRUSS BAY (8' WIDE) DORMERS. EACH STYLE CAN ALSO BE DONE AS 5 TRUSS BAY(10' WIDE) DORMERS.

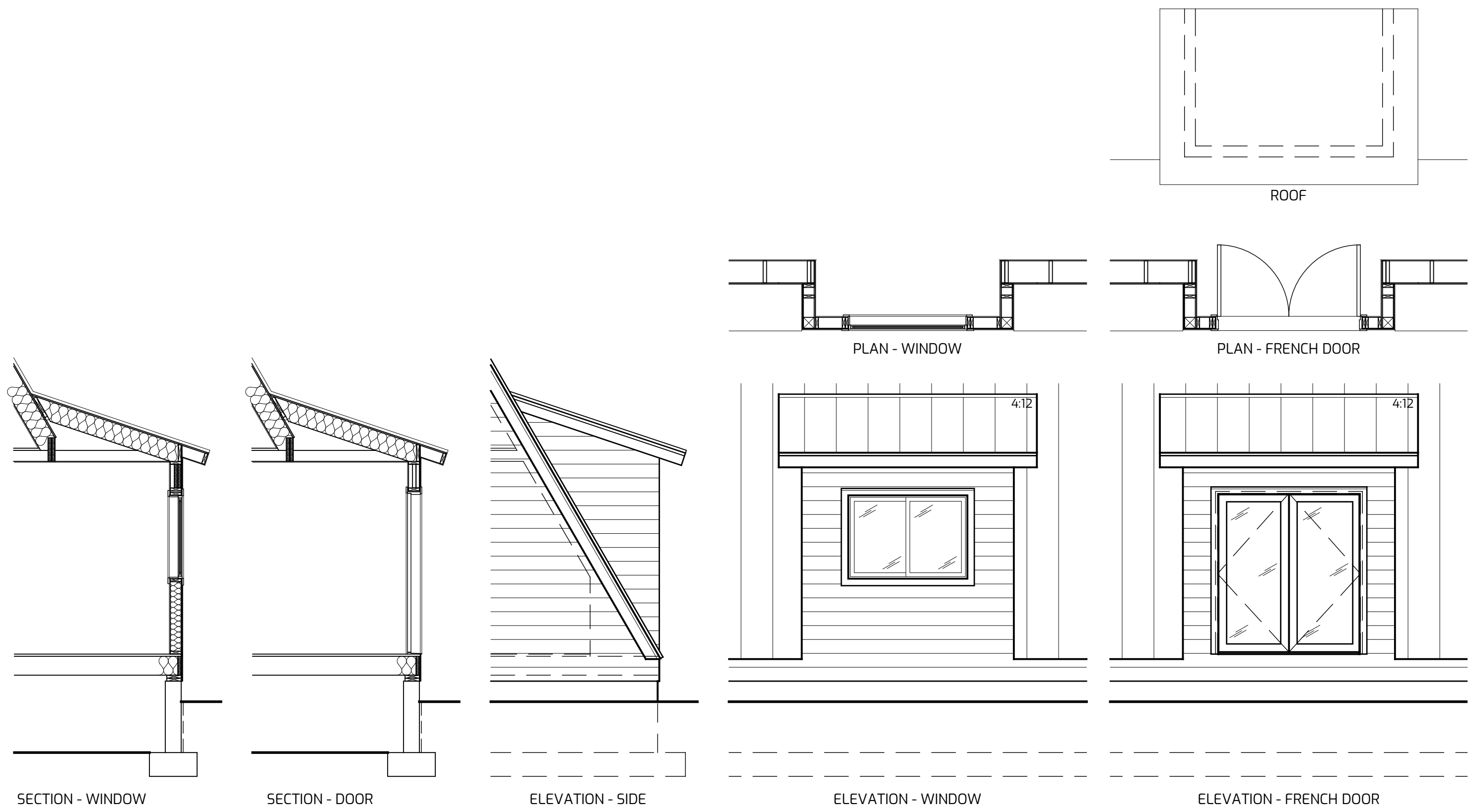
MAINTAIN MINIMUM OF 2 TRUSS BAYS BETWEEN DORMERS WITH SHED ROOFS AND MINIMUM OF 3 TRUSS BAYS BETWEEN DORMERS WITH GABLED ROOFS.



MAIN LEVEL - FULL DORMER - EXTENDED GABLED ROOF W/ DECK



MAIN LEVEL - FULL DORMER - GABLED ROOF



MAIN LEVEL - FULL DORMER - SHED ROOF W/ OVERHANG

DORMERS SHOWN ARE ALL 4 TRUSS BAY (8' WIDE) DORMERS. EACH STYLE CAN ALSO BE DONE AS 5 TRUSS BAY(10' WIDE) DORMERS.

AVRAME U.S.A

6313 WEST DOUBLE EAGLE CIRCLE,
SALT LAKE CITY, UT 84118
PHONE: 801.488.1111
WEBSITE: WWW.AVRAMEUSA.COM
EMAIL: SALES@AVRAMEUSA.COM

THE GRAPHIC MATERIAL AND DESIGN ON ALL SHEETS IN THIS SET REMAIN AT ALL TIMES THE PROPERTY OF AVRAME U.S.A. NO REPRODUCTION OR REUSE OF THE MATERIAL AND DESIGN CONTAINED HEREIN IS PROHIBITED WITHOUT THE WRITTEN CONSENT OF AVRAME U.S.A. ANY VIOLATION SHALL BE PROSECUTED TO THE FULLEST EXTENT OF THE LAW. COPYRIGHT AVRAME U.S.A. ALL RIGHTS RESERVED

DUO - OPTIONS

DRAWN FOR ONE-TIME USE FOR

AVRAME U.S.A.

ISSUE DATE 04/20/2023

REVISIONS

REVISION DELTA

D202

FULL DORMER
OPTIONS